



**REPUBLIC OF NAURU
GOVERNMENT GAZETTE
PUBLISHED BY AUTHORITY**

No. 143

11th September, 2013

Nauru

G.N. No. 670 / 2013

ESTATE

1. The Nauru Lands Committee has ascertained that the late **ANDROMEDA DEGIA** had been determined by the decision of the Lands Committee to be the owner of the following lands:-

DISTRICT	PORTION NO.	TYPE OF LAND	NAME OF LAND	GAZETTE NOTICE OF OWNERSHIP	SHARE	REMARKS
Anetan	81	c.l	Atimange	75/1999	11/240	
Anetan	104	c.l	Atedi	75/1999	11/240	
Anabar	16	c.l	Boroboron	75/1999	11/720	
Anabar	32	p.l	Atenimen	75/1999	11/720	
Anabar	44	p.l	Eatiti	75/1999	11/720	
Anabar	109	c.l	Boroboren	75/1999	11/720	
Anabar	113	c.l	Boroboren	75/1999	11/720	
Anabar	122	c.l	Boroboren	75/1999	11/720	
Anibare	184	p.l	Bogetsuww	75/1999	11/720	
Anibare	248	p.l	Atueo	75/1999	11/720	
Anibare	269	p.l	Anebe	75/1999	11/720	
Anibare	297	c.l	Bweranibok	75/1999	11/720	
Anibare	357	p.l	Atekapara	75/1999	11/720	
Ewa	40	p.l	Anibe	75/1999	11/720	
Ewa	108	c.l	Autubure	75/1999	11/960	
Anabar	20	p.l	Atetirir	75/1999	11/1440	
Anetan	131	p.l	Ubwidina	75/1999	11/1440	
Baitsi	32	p.l	Arurun	75/1999	11/1440	
Uaboe	1	p.l		75/1999	11/1440	
Anabar	51	p.l	Ibweruru	74/2000	1/198	LTO
Anibare	26	c.l	Meribo	74/2000	1/198	LTO
Anibare	225	p.l	Anurung	74/2000	1/198	LTO
Anibare	309	p.l	Boneida	74/2000	1/198	LTO
Anibare	349	p.l	Anoe	74/2000	1/198	LTO
Ijuw	47	c.l	Bogemoruw	74/2000	1/198	LTO

G.N. No. 670 / 2013(cont'd)

Meneñ	60	c.l	Manoye	74/2000	1/198	LTO
Meneñ	261	p.l	Maeow	74/2000	1/198	LTO
Meneñ	307	p.l	Anubwiya	74/2000	1/198	LTO
Meneñ	355	p.l	Ibea	74/2000	1/198	LTO
Meneñ	397	c.l	Irebedi	74/2000	1/198	LTO
Anabar	62	p.l	Borokumo	74/2000	5/1188	LTO
Ewa	201	c.l	Boroboron	74/2000	5/1188	LTO
Anabar	38	c.l	Aduba	74/2000	1/396	LTO
Anibare	254	p.l	Abaduijow	74/2000	1/396	LTO
Ijuw	2	p.l	Yatemeter	74/2000	1/396	LTO
Anabar	9	p.l	Adauber	74/2000	5/2376	LTO
Anabar	80	c.l	Arep	74/2000	1/594	LTO
Anabar	81	c.l	Arep	74/2000	1/792	LTO
Ijuw	100	p.l	Iako	74/2000	1/792	LTO
Ijuw	115	p.l	Aeiw	74/2000	1/792	LTO
Ijuw	120	p.l	Atajong	74/2000	1/792	LTO
Ijuw	126	c.l	Iatoborbor	74/2000	1/792	LTO
Baitsi	82	p.l	Ugino	74/2000	5/4752	LTO
Ewa	7	c.l	Arubo	74/2000	5/4752	LTO
Ewa	26	p.l	Arida	74/2000	5/4752	LTO
Ewa	144	c.l	Anuer	74/2000	5/4752	LTO
Ewa	153	c.l	Mamweiya	74/2000	5/4752	LTO
Ijuw	7	p.l	Ebara	74/2000	5/4752	LTO
Ijuw	34	c.l	Ganokoro	74/2000	5/4752	LTO
Ijuw	35	c.l	Eatdabuarik	74/2000	5/4752	LTO
Ijuw	53	c.l	Ganokoro	74/2000	5/4752	LTO
Ewa	186	c.l	Boroborob	74/2000	1/1056	LTO

G.N. No. 670 / 2013(cont'd)

DETERMINATION OF BENEFICIARIES

2. The Nauru Lands Committee has determined that the beneficiaries of the late **ANDROMEDA DEGIA** are:-

(a) In respect of the land shown in paragraph 1 above.

DISTRICT	PORTION NO.	TYPE OF LAND	NAME OF LAND	BENEFICIARIES	SHARE
Anetan	81	c.l	Atimange	Luckner Degia Loriana Degia Tretan Judd Degia Andrea Salome Degia Isaac Newton Degia Garuba Ezra Degia Crystal Diria Degia Eimagag Jenna Degia	11/1920 11/1920 11/1920 11/1920 11/1920 11/1920 11/1920 11/1920
Anetan	104	c.l	Atedi	As for portion no. 81 c.l	Anetan
Anabar	16	c.l	Boroboron	Luckner Degia Loriana Degia Tretan Judd Degia Andrea Salome Degia Isaac Newton Degia Garuba Ezra Degia Crystal Diria Degia Eimagag Jenna Degia	11/5760 11/5760 11/5760 11/5760 11/5760 11/5760 11/5760 11/5760
Anabar	32	p.l	Atenimen	As for portion no. 16 c.l	Anabar
Anabar	44	p.l	Eatiti	-do-	
Anabar	109	c.l	Boroboren	-do-	
Anabar	113	c.l	Boroboren	-do-	
Anabar	122	c.l	Boroboren	-do-	
Anibare	184	p.l	Bogetsuw	-do-	
Anibare	248	p.l	Atueo	-do-	
Anibare	269	p.l	Anebe	-do-	
Anibare	297	c.l	Bweranibok	-do-	
Anibare	357	p.l	Atekapara	-do-	
Ewa	40	p.l	Anibe	-do-	

G.N. No. 670 / 2013(cont'd)

Ewa	108	c.l	Autubure	Luckner Degia Loriana Degia Tretan Judd Degia Andrea Salome Degia Isaac Newton Degia Garuba Ezra Degia Crystal Diria Degia Eimagag Jenna Degia	11/7680 11/7680 11/7680 11/7680 11/7680 11/7680 11/7680 11/7680
Anabar	20	p.l	Atetirir	Luckner Degia Loriana Degia Tretan Judd Degia Andrea Salome Degia Isaac Newton Degia Garuba Ezra Degia Crystal Diria Degia Eimagag Jenna Degia	11/11520 11/11520 11/11520 11/11520 11/11520 11/11520 11/11520 11/11520
Anetan	131	p.l	Ubwidina	As for portion no. 20 p.l	Anabar
Baitsi	32	p.l	Arurun	-do-	
Uaboe	1	p.l		-do-	
Anabar	51	p.l	Ibweruru	Luckner Degia Loriana Degia Tretan Judd Degia Andrea Salome Degia Isaac Newton Degia Garuba Ezra Degia Crystal Diria Degia Eimagag Jenna Degia	1/1584 1/1584 1/1584 1/1584 1/1584 1/1584 1/1584 1/1584
Anibare	26	c.l	Meribo	As for portion no. 51 p.l	Anabar
Anibare	225	p.l	Anurung	-do-	
Anibare	309	p.l	Boneida	-do-	
Anibare	349	p.l	Anoe	-do-	
Ijuw	47	c.l	Bogemoruw	-do-	
Meneñ	60	c.l	Manoye	-do-	
Meneñ	261	p.l	Maeow	-do-	
Meneñ	307	p.l	Anubwiya	-do-	
Meneñ	355	p.l	Ibea	-do-	
Meneñ	397	c.l	Irebedi	-do-	

G.N. No. 670 / 2013(cont'd)

Anabar	62	p.l	Borokumo	Luckner Degia Loriana Degia Tretan Judd Degia Andrea Salome Degia Isaac Newton Degia Garuba Ezra Degia Crystal Diria Degia Eimagag Jenna Degia	5/1188 5/1188 5/1188 5/1188 5/1188 5/1188 5/1188 5/1188
Ewa	201	c.l	Boroboron	As for portion no.62 p.l	Anabar
Anabar	38	c.l	Aduba	Luckner Degia Loriana Degia Tretan Judd Degia Andrea Salome Degia Isaac Newton Degia Garuba Ezra Degia Crystal Diria Degia Eimagag Jenna Degia	5/9504 5/9504 5/9504 5/9504 5/9504 5/9504 5/9504 5/9504
Anibare	254	p.l	Abaduijow	As for portion no. 38 c.l	Anabar
Ijuw	2	p.l	Yatometer	-do-	
Anabar	9	p.l	Adaubwer	Luckner Degia Loriana Degia Tretan Judd Degia Andrea Salome Degia Isaac Newton Degia Garuba Ezra Degia Crystal Diria Degia Eimagag Jenna Degia	5/19008 5/19008 5/19008 5/19008 5/19008 5/19008 5/19008 5/19008
Anabar	80	c.l	Arep	Luckner Degia Loriana Degia Tretan Judd Degia Andrea Salome Degia Isaac Newton Degia Garuba Ezra Degia Crystal Diria Degia Eimagag Jenna Degia	1/4752 1/4752 1/4752 1/4752 1/4752 1/4752 1/4752 1/4752
Anabar	81	c.l	Arep	Luckner Degia Loriana Degia Tretan Judd Degia Andrea Salome Degia Isaac Newton Degia Garuba Ezra Degia Crystal Diria Degia Eimagag Jenna Degia	1/6336 1/6336 1/6336 1/6336 1/6336 1/6336 1/6336 1/6336

G.N. No. 670 / 2013(cont'd)

Ijuw	100	p.l	Iako	As for portion no. 81 c.l	Anabar
Ijuw	115	p.l	Aeiw	-do-	
Ijuw	120	p.l	Atajong	-do-	
Ijuw	126	c.l	Iatoborbor	-do-	
Baitsi	82	p.l	Ugino	Luckner Degia Loriana Degia Tretan Judd Degia Andrea Salome Degia Isaac Newton Degia Garuba Ezra Degia Crystal Diria Degia Eimagag Jenna Degia	5/38016 5/38016 5/38016 5/38016 5/38016 5/38016 5/38016 5/38016
Ewa	7	c.l	Arubo	As for portion no. 82 p.l	Baitsi
Ewa	26	p.l	Arida	-do-	
Ewa	144	c.l	Anuer	-do-	
Ewa	153	c.l	Mamweiya	-do-	
Ijuw	7	p.l	Ebara	-do-	
Ijuw	34	c.l	Ganokoro	-do-	
Ijuw	35	c.l	Eatdabuarik	-do-	
Ijuw	53	c.l	Ganokoro	-do-	
Ewa	186	c.l	Boroborob	Luckner Degia Loriana Degia Tretan Judd Degia Andrea Salome Degia Isaac Newton Degia Garuba Ezra Degia Crystal Diria Degia Eimagag Jenna Degia	1/8448 1/8448 1/8448 1/8448 1/8448 1/8448 1/8448 1/8448

NOTE: Those who disagree with the above distribution may appeal to the Supreme Court Registry within 21 days of the publication of the Government Gazette Notice.

TYRAN CAPELLE
CHAIRPERSON- NAURU LANDS COMMITTEE

G.N. No. 671 / 2013

ESTATE

1. The Nauru Lands Committee has ascertained that the late **ROSALINDA EIDODA JONE** of Yaren District had been determined by the decision of the Lands Committee to be the owner of the following lands:-

DISTRICT	PORTION NO.	TYPE OF LAND	NAME OF LAND	GAZETTE NOTICE OF OWNERSHIP	SHARE
Boe	16	p.l	Imaragae	24/2004	1/18
Boe	22	p.l	Idouma	24/2004	1/18
Boe	33	c.l	-	24/2004	1/18
Boe	157	c.l	Idobua	24/2004	1/18
Boe	182	c.l	Baramwin	24/2004	1/18
Buada	260	c.l	Ubweno	24/2004	1/18
Buada	322	c.l	Idabugia	24/2004	1/18
Yaren	59	c.l	Yaren	24/2004	1/18
Ijuw	86	p.l	Yunguro	24/2004	13/288
Boe	180	c.l	Iwugaga	24/2004	1/24
Yaren	262	p.l	Anijo	24/2004	1/24
Aiwo	200	c.l	Yangor	24/2004	1/36
Aiwo	217	c.l	Yangor	24/2004	1/36
Anibare	142	p.l	Urokeija, Eatdenano	24/2004	1/36
Anibare	154	p.l	Urokeiya	24/2004	1/36
Anibare	212	p.l	Bogetsiw	24/2004	1/36
Anibare	268	p.l	Anwidito	24/2004	1/36
Anibare	278	p.l	Idobure	24/2004	1/36
Anibare	290	p.l	Eatijo	24/2004	1/36
Anibare	294	c.l	Moaijauwe	24/2004	1/36
Anibare	313	c.l	Ate	24/2004	1/36
Boe	154	c.l	Ugiangang	24/2004	1/36
Boe	174	c.l	Tinimen	24/2004	1/36
Boe	175	c.l	Tinimen	24/2004	1/36
Boe	176	c.l	Tinimen	24/2004	1/36
Boe	177	c.l	Tinimen	24/2004	1/36
Buada	24	p.l	Maren	24/2004	1/36
Buada	49	p.l	Ianbanonepe	24/2004	1/36
Buada	312	c.l	Bangabanga	24/2004	1/36
Buada	350	c.l	Eatdobuarik	24/2004	1/36
Buada	355	c.l	Bangabanga	24/2004	1/36

G.N. No. 671 / 2013(cont'd)

Denigomodu	90	p.l	-	24/2004	1/36
Ijuw	30	c.l	Ganokoro	24/2004	1/36
Meneñ	41	c.l	Anabaubo	24/2004	1/36
Meneñ	46	c.l	Areraipon	24/2004	1/36
Meneñ	53	c.l	Bagabab	24/2004	1/36
Meneñ	56	c.l	Aten	24/2004	1/36
Meneñ	57	c.l	Aten	24/2004	1/36
Meneñ	64	c.l	Iua	24/2004	1/36
Meneñ	66	c.l	Baji, Ubadi	24/2004	1/36
Meneñ	67	c.l	Iyu	24/2004	1/36
Meneñ	79	c.l	Iua	24/2004	1/36
Meneñ	83	c.l	Anot	24/2004	1/36
Meneñ	101	c.l	Irebedi	24/2004	1/36
Meneñ	106	c.l	Mara	24/2004	1/36
Meneñ	108	c.l	Irebedi	24/2004	1/36
Meneñ	220	p.l	Ududin	24/2004	1/36
Meneñ	230	p.l	Anoerara	24/2004	1/36
Meneñ	248	p.l	Anematte	24/2004	1/36
Meneñ	296	p.l	Anabaubo	24/2004	1/36
Meneñ	300	p.l	Ijuw	24/2004	1/36
Meneñ	301	p.l	Arekogo	24/2004	1/36
Meneñ	304	p.l	Abio	24/2004	1/36
Meneñ	312	p.l	Ibawon	24/2004	1/36
Meneñ	313	p.l	Ibawon	24/2004	1/36
Meneñ	336	p.l	Magenae	24/2004	1/36
Meneñ	348	p.l	Aeijen	24/2004	1/36
Uaboe	85	c.l	Imwenom	24/2004	1/36
Yaren	42	c.l	Ademenawa	24/2004	1/36
Yaren	45	c.l	Ademenawa	24/2004	1/36
Yaren	55	c.l	Biteije	24/2004	1/36
Yaren	63	c.l	Yaren	24/2004	1/36
Yaren	65	c.l	Yaren	24/2004	1/36
Yaren	108	c.l	Bada	24/2004	1/36
Yaren	109	c.l	Bada	24/2004	1/36
Yaren	124	c.l	Aningobwi	24/2004	1/36
Yaren	158	c.l	Eategadaw	24/2004	1/36
Yaren	174	c.l	Iatokonobo	24/2004	1/36
Yaren	181	c.l	Bogetirir	24/2004	1/36
Yaren	199	c.l	Iren	24/2004	1/36
Yaren	206	c.l	Kibaba	24/2004	1/36

G.N. No. 671 / 2013(cont'd)

Yaren	207	c.l	Kibaba	24/2004	1/36
Yaren	238	p.l	Bugogo	24/2004	1/36
Yaren	288	c.l	Bogetirir	24/2004	1/36
Yaren	301	p.l	Ugianan	24/2004	1/36
Yaren	310	p.l	Atanawak	24/2004	1/36
Yaren	315	p.l	Atanawak	24/2004	1/36
Yaren	349	p.l	Maren	24/2004	1/36
Anibare	137	p.l	Urokeiya, Medeto	24/2004	1/72
Ijuw	56	c.l	Eateanibain	24/2004	1/72
Ijuw	102	p.l	Bware	24/2004	1/72
Ijuw	109	p.l	Anijo	24/2004	1/72
Meneñ	59	c.l	Bati	24/2004	1/72
Meneñ	370	p.l	Bongibia	24/2004	1/72
Meneñ	380	p.l	Aeyin	24/2004	1/72
Meneñ	415	p.l	Karawinuroro	24/2004	1/72
Yaren	74	c.l	Atabor	24/2004	1/72
Boe	179	c.l	Eatirir	24/2004	1/96
Meneñ	337	p.l	Magenae	24/2004	5/768
Anibare	188	p.l	Atoredeto	24/2004	1/216
Baitsi	54	p.l	Uaboko	24/2004	1/216
Baitsi	51	p.l	Anemere	24/2004	1/360

DETERMINATION OF BENEFICIARIES

2. The Nauru Lands Committee has determined that the beneficiaries of the late **ROSALINDA EIDODA JONE** are:-
 (a) In respect of the land shown in paragraph 1 above.

DISTRICT	PORTION NO.	NAME OF LAND	BENEFICIARIES	SHARE
Boe	16	Imaragae	Gerard Jone	1/18
Boe	22	Idouma	As for portion no. 16 p.l	Boe
Boe	33	-	-do-	
Boe	157	Idobua	-do-	
Boe	182	Baramwin	-do-	
Buada	260	Ubweno	-do-	
Buada	322	Idaubugia	-do-	
Yaren	59	Yaren	-do-	
Ijuw	86	Yunguro	Gerard Jone	13/288
Boe	180	Iwugaga	Gerard Jone	1/24
Yaren	262	Anijo	As for portion no. 180 c.l	Boe

G.N. No. 671 / 2013(cont'd)

Aiwo	200	Yangor	Gerard Jone	1/36
Aiwo	217	Yangor	As for portion no. 200 c.1	Aiwo
Anibare	142	Urokeija, Eatdenano	-do-	
Anibare	154	Urokeiya	-do-	
Anibare	212	Bogetsiw	-do-	
Anibare	268	Anwidito	-do-	
Anibare	278	Idobure	-do-	
Anibare	290	Eatijo	-do-	
Anibare	294	Moaijauwe	-do-	
Anibare	313	Ate	-do-	
Boe	154	Ugiangang	-do-	
Boe	174	Tinimen	-do-	
Boe	175	Tinimen	-do-	
Boe	176	Tinimen	-do-	
Boe	177	Tinimen	-do-	
Buada	24	Maren	-do-	
Buada	49	Ianbanonepe	-do-	
Buada	312	Bangabanga	-do-	
Buada	350	Eatdobuarik	-do-	
Buada	355	Bangabanga	-do-	
Denigomodu	90	-	-do-	
Ijuw	30	Ganokoro	-do-	
Meneñ	41	Anabaubo	-do-	
Meneñ	46	Areraipon	-do-	
Meneñ	53	Bagabab	-do-	
Meneñ	56	Aten	-do-	
Meneñ	57	Aten	-do-	
Meneñ	64	Iua	-do-	
Meneñ	66	Baji, Ubadi	-do-	
Meneñ	67	Iyu	-do-	
Meneñ	79	Iua	-do-	
Meneñ	83	Anot	-do-	
Meneñ	101	Irebedi	-do-	
Meneñ	106	Mara	-do-	
Meneñ	108	Irebedi	-do-	
Meneñ	220	Ududin	-do-	
Meneñ	230	Anoerara	-do-	
Meneñ	248	Anematte	-do-	
Meneñ	296	Anabaubo	-do-	
Meneñ	300	Ijuw	-do-	

G.N. No. 671 / 2013(cont'd)

Meneñ	301	Arekogo	-do-	
Meneñ	304	Abio	-do-	
Meneñ	312	Ibawon	-do-	
Meneñ	313	Ibawon	-do-	
Meneñ	336	Magenae	-do-	
Meneñ	348	Aeijen	-do-	
Uaboe	85	Imwenom	-do-	
Yaren	42	Ademenawa	-do-	
Yaren	45	Ademenawa	-do-	
Yaren	55	Biteije	-do-	
Yaren	63	Yaren	-do-	
Yaren	65	Yaren	-do-	
Yaren	108	Bada	-do-	
Yaren	109	Bada	-do-	
Yaren	124	Aningobwi	-do-	
Yaren	158	Eategadaw	-do-	
Yaren	174	Iatokonobo	-do-	
Yaren	181	Bogetirir	-do-	
Yaren	199	Iren	-do-	
Yaren	206	Kibaba	-do-	
Yaren	207	Kibaba	-do-	
Yaren	238	Bugogo	-do-	
Yaren	288	Bogetirir	-do-	
Yaren	301	Ugianan	-do-	
Yaren	310	Atanawak	-do-	
Yaren	315	Atanawak	-do-	
Yaren	349	Maren	-do-	
Anibare	137	Urokeiya, Medeto	Gerard Jone	1/72
Ijuw	56	Eateanibain	As for portion no. 137 p.1	Anibare
Ijuw	102	Bware	-do-	
Ijuw	109	Anijo	-do-	
Meneñ	59	Bati	-do-	
Meneñ	370	Bongibia	-do-	
Meneñ	380	Aeiyin	-do-	
Meneñ	415	Karawinuroro	-do-	

G.N. No. 671 / 2013(cont'd)

Yaren	74	Atabor	-do-	
Boe	179	Eatirir	Gerard Jone	1/96
Meneñ	337	Magenae	Gerard Jone	5/768
Anibare	188	Atoredeto	Gerard Jone	1/216
Baitsi	54	Uaboko	As for portion no. 188 p.l	Anibare
Baitsi	51	Anemere	Gerard Jone	1/360

NOTE: Those who disagree with the above distribution may appeal to the Supreme Court Registry within 21 days of the publication of the Government Gazette Notice.

TYRAN CAPELLE
CHAIRPERSON- NAURU LANDS COMMITTEE

G.N. No. 672 / 2013

ESTATE

1. The Nauru Lands Committee has ascertained that the late **ALFRED CECIL** of Boe District had been determined by the decision of the Lands Committee to be the owner of the following lands:-

DISTRICT	PORTION NO.	TYPE OF LAND	NAME OF LAND	GAZETTE NOTICE OF OWNERSHIP	SHARE
Buada	30	p.l	Ijatsi	30/1998	1/24
Buada	235	c.l	Barago	30/1998	1/24
Buada	237	c.l	Boremama	30/1998	1/24
Nibok	2	p.l	-	30/1998	1/24
Nibok	29	p.l	-	30/1998	1/24
Buada	239	c.l	Boremama	30/1998	1/36
Buada	387	p.l	F.G.W.S.L	3/1987	1/36
Aiwo	9	c.l	Anibawo	30/1998	1/48
Aiwo	10	c.l	Anibawo	30/1998	1/48
Aiwo	14	c.l	Atoredeto	30/1998	1/48
Aiwo	15	c.l	Atoredeto	30/1998	1/48
Aiwo	262	c.l	Anibawo	30/1998	1/48
Aiwo	451	p.l	Anota	30/1998	1/48
Anibare	131	p.l	Aniraeoe	30/1998	1/48
Buada	79	p.l	Ijuae	30/1998	1/48
Buada	87	p.l	Ijuae	30/1998	1/48

G.N. No. 672 / 2013(cont'd)

Buada	117	p.l	Yedauw	30/1998	1/48
Buada	153	p.l	Anota	30/1998	1/48
Buada	156	p.l	Atebobo	30/1998	1/48
Buada	170	p.l	Atenani	30/1998	1/48
Buada	238	c.l	Boremama	30/1998	1/48
Nibok	66	p.l	Bwimeremer	30/1998	1/48
Buada	20	p.l	Atero	30/1998	1/72
Uaboe	3	p.l	Ududin	30/1998	1/72
Uaboe	28	p.l	Uduoin	30/1998	1/72
Uaboe	35	p.l	Yangebawo	30/1998	1/72
Uaboe	58	p.l	Iaroe	30/1998	1/72
Uaboe	45	p.l	Atebae	30/1998	1/2240
Uaboe	62	p.l	Atebae	30/1998	1/2240

DETERMINATION OF BENEFICIARIES

2. The Nauru Lands Committee has determined that the beneficiaries of the late **ALFRED CECIL** are:
 (a) In respect of the land shown in paragraph 1 above.

DISTRICT	PORTION NO.	NAME OF LAND	BENEFICIARIES	SHARE
Buada	30	Ijatsi	Ruby Cecil (LTO) Pinkston Cecil Baston Cecil King Cecil Marquez Cecil Whitbourne Cecil	1/144 1/144 1/144 1/144 1/144 1/144
Buada	235	Barago	As for portion no. 30 p.l	Buada
Buada	237	Boremama	-do-	
Nibok	2	-	-do-	
Nibok	29	-	-do-	
Buada	239	Boremama	Ruby Cecil (LTO) Pinkston Cecil Baston Cecil King Cecil Marquez Cecil Whitbourne Cecil	1/216 1/216 1/216 1/216 1/216 1/216
Buada	387	F.G.W.S.L	As for portion no. 239 c.l	Buada

G.N. No. 672 / 2013(cont'd)

Aiwo	9	Anibawo	Ruby Cecil (LTO) Pinkston Cecil Baston Cecil King Cecil Marquez Cecil Whitbourne Cecil	1/288 1/288 1/288 1/288 1/288 1/288
Aiwo	10	Anibawo	As for portion no. 9 c.l	Aiwo
Aiwo	14	Atoredeto	-do-	
Aiwo	15	Atoredeto	-do-	
Aiwo	262	Anibawo	-do-	
Aiwo	451	Anota	-do-	
Anibare	131	Aniraeoe	-do-	
Buada	79	Ijuae	-do-	
Buada	87	Ijuae	-do-	
Buada	117	Yedauw	-do-	
Buada	153	Anota	-do-	
Buada	156	Atebobo	-do-	
Buada	170	Atenani	-do-	
Buada	238	Boremama	-do-	
Nibok	66	Bwimeremer	-do-	
Buada	20	Atero	Ruby Cecil (LTO) Pinkston Cecil Baston Cecil King Cecil Marquez Cecil Whitbourne Cecil	1/432 1/432 1/432 1/432 1/432 1/432
Uaboe	3	Ududin	As for portion no. 20 p.l	Buada
Uaboe	28	Uduoin	-do-	
Uaboe	35	Yangebawo	-do-	
Uaboe	58	Iaroe	-do-	
Uaboe	45	Atebae	Ruby Cecil (LTO) Pinkston Cecil Baston Cecil King Cecil Marquez Cecil Whitbourne Cecil	1/13440 1/13440 1/13440 1/13440 1/13440 1/13340
Uaboe	62	Atebae	As for portion no. 45 p.l	Uaboe

NOTE: Those who disagree with the above determination may appeal to the Supreme Court Registry within 21 days of the publication of the Government Gazette Notice.

TYRAN CAPELLE
CHAIRPERSON- NAURU LANDS COMMITTEE

ESTATE

1. The Nauru Lands Committee has ascertained that the late **JOE IGA** of Yaren District had been determined by the decision of the Lands Committee to be the owner of the following lands:-

DISTRICT	PORTION NO.	TYPE OF LAND	NAME OF LAND	GAZETTE NOTICE OF OWNERSHIP	SHARE
Ijuw	32	c.l	Atayong	65/2000	25/3673
Ewa	76	p.l	Mitsijij, Uaboko	65/2000	1/160
Ewa	172	c.l	Deirereinimen	65/2000	50/8019
Ewa	190	p.l	Anoero	65/2000	50/8019
Ewa	45	p.l	Idageang	65/2000	1/192
Ijuw	76	p.l	Bware	65/2000	1/216
Ijuw	121	p.l	Anebwor	65/2000	1/216
Anabar	48	p.l	Ibweruru	65/2000	1/240
Meneñ	95	c.l	Irebedi	27/2004	1/330
Meneñ	97	c.l	Amwararo	27/2004	1/330
Meneñ	255	p.l	Areuin	27/2004	1/330
Meneñ	269	p.l	Ameda	27/2004	1/330
Yaren	32	c.l	Iatebokenaeor	27/2004	1/330
Yaren	41	c.l	Iatebokenaeor	27/2004	1/330
Yaren	98	c.l	Atomo	27/2004	1/330
Yaren	122	c.l	Aningabwi	27/2004	1/330
Yaren	126	c.l	Aningabwi	27/2004	1/330
Yaren	127	c.l	Aningobwi	27/2004	1/330
Yaren	234	p.l	Aeape	27/2004	1/330
Yaren	236	p.l	Aeape	27/2004	1/330
Baitsi	189	p.l	Betio	65/2000	1/480
Baitsi	203	p.l	Eatetawak	65/2000	1/480
Nibok	81	p.l	Amero	65/2000	1/480
Uaboe	76	c.l	Ewa	65/2000	1/480
Uaboe	92	c.l	Ibitumwararo	65/2000	1/480
Uaboe	100	c.l	Muemewin	65/2000	1/480
Uaboe	139	p.l	Anni	65/2000	1/480
Uaboe	146	c.l	Imwenom	65/2000	1/480
Meneñ	417	p.l	Atebawo	65/2000	1/540
Yaren	273	p.l	Anoumori	27/2004	1/550
Anabar	25	p.l	Queirang	65/2000	1/640
Yaren	92	c.l	Dagarauwa	27/2004	1/660

G.N. No. 673 / 2013(cont'd)

Yaren	118	c.l	Aningobwi	27/2004	1/660
Yaren	251	p.l	Anoror	27/2004	1/660
Yaren	291	p.l	Ugeang	27/2004	1/660
Meneñ	234	p.l	Ibea	27/2004	2/1485
Baitsi	152	c.l	Aturobu	27/2004	1/990
Baitsi	206	p.l	Eatetowae, Ibogetu	27/2004	1/990
Denigomodu	278	c.l	Ariyeyen	27/2004	1/990
Nibok	188	c.l	Atebwae	27/2004	1/990
Nibok	224	c.l	Ganaquo	27/2004	1/990
Uaboe	48	p.l	Yapwijuw	27/2004	1/990
Yaren	114	c.l	Yaneor	65/2000	1/990
Yaren	173	c.l	Aujo	27/2004	1/990
Yaren	235	p.l	Aeape	27/2004	1/990
Yaren	289	p.l	Udueni	27/2004	1/990
Yaren	303	p.l	Ugiangang	27/2004	1/990
Nibok	9	p.l	Atung	27/2004	1/1320
Yaren	89	c.l	Atomo	27/2004	1/1320
Yaren	90	c.l	Atomo	27/2004	1/1320
Yaren	342	p.l	Umwanawa	27/2004	1/1485
Yaren	346	p.l	Umwanawa	27/2004	1/1650
Meneñ	252	p.l	Anemet, Ateibi	27/2004	1/1980
Yaren	87	c.l	Atomo	27/2004	1/1980
Yaren	131	c.l	Aningabwi	27/2004	1/1980
Yaren	132	c.l	Aningobwi	27/2004	1/1980
Yaren	135	c.l	Ijongin, Aningabwi	27/2004	1/1980
Yaren	144	c.l	Ijongin, Aningabwi	27/2004	1/1980
Yaren	128	c.l	Amwareobwiden	27/2004	1/2640
Yaren	274	p.l	Amwareobwiden	27/2004	1/2640
Yaren	240	p.l	Mwangange	27/2004	1/2970
Yaren	277	p.l	Adetako	27/2004	1/2970
Yaren	316	p.l	Adedabiri	27/2004	1/2970
Anibare	220	p.l	Tubwina	27/2004	1/3960
Yaren	102	c.l	Atemororo	27/2004	1/4752
Yaren	248	p.l	Anoeui	27/2004	1/4950
Yaren	343	p.l	Anamaragi	27/2004	1/4950

DETERMINATION OF BENEFICIARIES

2. The Nauru Lands Committee has determined that the beneficiaries of the late **JOE IGA** are:
 (b) In respect of the land shown in paragraph 1 above.

DISTRICT	PORTION NO.	NAME OF LAND	BENEFICIARIES	SHARE
Ijuw	32	Atayong	Joseph Iga (Oiyen Iga- T/Tee)	25/3673
Ewa	76	Mitsijij, Uaboko	Joseph Iga (Oiyen Iga- T/Tee)	1/160
Ewa	172	Deirereinimen	Joseph Iga (Oiyen Iga- T/Tee)	50/8019
Ewa	190	Anoero	As for portion no.172 c.1	Ewa
Ewa	45	Idageang	Joseph Iga (Oiyen Iga- T/Tee)	1/192
Ijuw	76	Bware	Joseph Iga (Oiyen Iga- T/Tee)	1/216
Ijuw	121	Anebwor	As for portion no.76 p.1	Ijuw
Anabar	48	Ibweruru	Joseph Iga (Oiyen Iga- T/Tee)	1/240
Meneñ	95	Irebedi	Joseph Iga (Oiyen Iga- T/Tee)	1/330
Meneñ	97	Amwararo	As for portion no. 95 c.1	Meneñ
Meneñ	255	Areuin	-do-	
Meneñ	269	Ameda	-do-	
Yaren	32	Iatebokenaeor	-do-	
Yaren	41	Iatebokenaeor	-do-	
Yaren	98	Atomo	-do-	
Yaren	122	Aningabwi	-do-	
Yaren	126	Aningabwi	-do-	
Yaren	127	Aningobwi	-do-	
Yaren	234	Aeape	-do-	
Yaren	236	Aeape	-do-	
Baitsi	189	Betio	Joseph Iga (Oiyen Iga- T/Tee)	1/480
Baitsi	203	Eatetawak	As for portion no. 189 p.1	Baitsi
Nibok	81	Amero	-do-	
Uaboe	76	Ewa	-do-	
Uaboe	92	Ibitumwararo	-do-	

G.N. No. 673 / 2013(cont'd)

Uaboe	100	Muemewin	-do-	
Uaboe	139	Anni	-do-	
Uaboe	146	Imwenom	-do-	
Meneñ	417	Atebawo	Joseph Iga (Oiyen Iga- T/Tee)	1/540
Yaren	273	Anoumori	Joseph Iga (Oiyen Iga- T/Tee)	1/550
Anabar	25	Queirang	Joseph Iga (Oiyen Iga- T/Tee)	1/640
Yaren	92	Dagarauwa	Joseph Iga (Oiyen Iga- T/Tee)	1/660
Yaren	118	Aningobwi	As for portion no. 92 c.1	Yaren
Yaren	251	Anoror	-do-	
Yaren	291	Ugeang	-do-	
Meneñ	234	Ibea	Joseph Iga (Oiyen Iga- T/Tee)	2/1485
Baitsi	152	Aturobu	Joseph Iga (Oiyen Iga- T/Tee)	1/990
Baitsi	206	Eatetowae, Ibogetu	As for portion no. 152 c.1	Baitsi
Denigomodu	278	Ariyeyen	-do-	
Nibok	188	Atebwae	-do-	
Nibok	224	Ganaquo	-do-	
Uaboe	48	Yapwijuw	-do-	
Yaren	114	Yaneor	-do-	
Yaren	173	Aujo	-do-	
Yaren	235	Aeape	-do-	
Yaren	289	Udueni	-do-	
Yaren	303	Ugiangang	-do-	
Nibok	9	Atung	Joseph Iga (Oiyen Iga- T/Tee)	1/1320
Yaren	89	Atomo	As for portion no. 9 p.1	Nibok
Yaren	90	Atomo	-do-	
Yaren	342	Umwanawa	Joseph Iga (Oiyen Iga- T/Tee)	1/1485
Yaren	346	Umwanawa	Joseph Iga (Oiyen Iga- T/Tee)	1/1650
Meneñ	252	Anemet, Ateibi	Joseph Iga (Oiyen Iga- T/Tee)	1/1980
Yaren	87	Atomo	As for portion no. 252 p.1	Meneñ
Yaren	131	Aningabwi	-do-	

G.N. No. 673 / 2013(cont'd)

Yaren	132	Aningobwi	-do-	
Yaren	135	Ijongin, Aningabwi	-do-	
Yaren	144	Ijongin, Aningabwi	-do-	
Yaren	128	Amwareobwiden	Joseph Iga (Oiyen Iga- T/Tee)	1/2640
Yaren	274	Amwareobwiden	As for portion no. 128 c.l	Yaren
Yaren	240	Mwangange	Joseph Iga (Oiyen Iga- T/Tee)	1/2970
Yaren	277	Adetako	As for portion no. 240 p.l	Yaren
Yaren	316	Adedabiri	-do-	
Anibare	220	Tubwina	Joseph Iga (Oiyen Iga- T/Tee)	1/3960
Yaren	102	Atemororo	Joseph Iga (Oiyen Iga- T/Tee)	1/4752
Yaren	248	Anoeui	Joseph Iga (Oiyen Iga- T/Tee)	1/4950
Yaren	343	Anamaragi	As for portion no.248 p.l	Yaren

NOTE: Those who disagree with the above determination may appeal to the Supreme Court Registry within 21 days of the publication of the Government Gazette Notice.

TYRAN CAPELLE
CHAIRPERSON- NAURU LANDS COMMITTEE

ESTATE

1. The Nauru Lands Committee has ascertained that the late **LEO KEKE** of Yaren District had been determined by the decision of the Lands Committee to be the owner of the following lands:-

DISTRICT	PORTION NO.	TYPE OF LAND	NAME OF LAND	GAZETTE NOTICE OF OWNERSHIP	SHARE	RMKS
Meneñ	44	c.l	Awidainging	40/83	1/9	
Meneñ	285	p.l	Atawidawo	40/83	1/18	
Yaren	251	p.l	Anoror	40/83	1/18	
Baitsi	116	c.l	Agoro	40/83	1/27	
Buada	357	p.l	Yauriaria	40/83	1/27	
Denigomodu	1	p.l	Aenin	40/83	1/27	
Denigomodu	18	p.l	Ainganga	40/83	1/27	
Meneñ	265	p.l	Anemet	40/83	1/27	
Meneñ	268	p.l	Atuwuro	40/83	1/27	
Meneñ	278	p.l	Beradum	40/83	1/27	
Yaren	39	z	Yaren, Apoe	40/83	1/27	
Yaren	75	c.l	Idadaria	40/83	1/27	
Yaren	153	c.l	Iatobi	40/83	1/27	
Yaren	154	c.l	Ubadu	40/83	1/27	
Yaren	157	c.l	Ubadu	40/83	1/27	
Yaren	165	c.l	Ibwenape	40/83	1/27	
Yaren	172	c.l	Ananumwi	40/83	1/27	
Yaren	191	c.l	Attar	40/83	1/27	
Yaren	201	c.l	Iren	40/83	1/27	
Yaren	202	c.l	Ijako	40/83	1/27	
Yaren	204	c.l	Iren	40/83	1/27	
Yaren	205	c.l	Iren	40/83	1/27	
Yaren	285	p.l	Ubadu	40/83	1/27	
Yaren	294	p.l	Attar	40/83	1/27	
Yaren	89	c.l	Atomo	40/83	1/36	
Yaren	90	c.l	Atomo	40/83	1/36	
Yaren	303	p.l	Ugiangang	40/83	1/54	
Aiwo	81	c.l	Ubadoge	40/83	1/81	
Boe	88	c.l	Anomongiren	40/83	1/81	
Buada	55	p.l	Ijakabab	40/83	1/81	
Yaren	330	p.l	Atubwinumor	40/83	1/81	

G.N. No. 674 / 2013(cont'd)

Anabar	106	c.l	Aduba	21/91	1/28	LTO
Anetan	52	c.l	Anobarouw	21/91	1/28	LTO
Anetan	68	c.l	Anuwuroija	21/91	1/28	LTO
Anetan	92	c.l	Otsinuwo	21/91	1/28	LTO
Anetan	97	c.l	Mererauwa	21/91	1/28	LTO
Anetan	103	c.l	Eatibibido	21/91	1/28	LTO
Anetan	109	c.l	Anetsiw	21/91	1/28	LTO
Anetan	128	p.l	Atungi	21/91	1/28	LTO
Baitsi	89	c.l	Mangadab	21/91	1/28	LTO
Baitsi	90	c.l	Mangadab	21/91	1/28	LTO
Ewa	3	c.l	Mererauwa	21/91	1/28	LTO
Ewa	138	c.l	Mererauwa	21/91	1/28	LTO
Ewa	141	c.l	Medang	21/91	1/28	LTO
Ewa	152	c.l	Aeabab	21/91	1/28	LTO
Ewa	156	c.l	Bogoworowor	21/91	1/28	LTO
Ewa	170	c.l	Ijungureb	21/91	1/28	LTO
Ewa	184	c.l	Madang	21/91	1/28	LTO
Ijuw	46	c.l	Bogomoruw	21/91	1/28	LTO
Ijuw	55	c.l	Eateanibain	21/91	1/28	LTO
Ijuw	60	c.l	Aro	21/91	1/28	LTO
Ijuw	69	p.l	Ijunguro	21/91	1/28	LTO
Ijuw	70	c.l	Iatoborobor	21/91	1/28	LTO
Ijuw	73	p.l	Areruwi	21/91	1/28	LTO
Ijuw	103	p.l	Anumwimwi	21/91	1/28	LTO
Ijuw	124	p.l	Anebwor	21/91	1/28	LTO
Ijuw	705	p.l	Anebar	21/91	1/28	LTO
Meneñ	4	c.l	Yaew	21/91	1/28	LTO
Meneñ	13	c.l	Yaew	21/91	1/28	LTO
Meneñ	187	p.l	Anaoe	21/91	1/28	LTO
Meneñ	189	c.l	Anaoe	21/91	1/28	LTO
Meneñ	191	c.l	Anaoe	21/91	1/28	LTO
Meneñ	357	p.l	Anaoe	21/91	1/28	LTO
Yaren	134	c.l	Ijongin	21/91	1/28	LTO
Yaren	331	p.l	Atubwinumor	21/91	1/28	LTO
Anetan	102	c.l	Ronawi	21/91	1/56	LTO
Boe	43	p.l	Adenera	21/91	1/56	LTO
Buada	27	p.l	Rubwinija	21/91	1/56	LTO
Ewa	6	c.l	Mangadab	57/92	1/56	LTO
Ijuw	17	p.l	Aneborara	21/91	1/56	LTO
Ijuw	121	p.l	Anebwor	74/92	1/56	LTO

G.N. No. 674 / 2013(cont'd)

Anabar	7	p.l	Tararo	21/91	1/112	LTO
Anabar	17	p.l	Arinugogo	21/91	1/112	LTO
Anabar	21	p.l	Atetirir	21/91	1/112	LTO
Anabar	24	p.l	Arinogogo	21/91	1/112	LTO
Anabar	26	p.l	Atibenar	21/91	1/112	LTO
Anabar	34	p.l	Anakarikik	21/91	1/112	LTO
Anabar	36	p.l	Queirang	21/91	1/112	LTO
Anabar	49	p.l	Ibweruru	21/91	1/112	LTO
Anabar	55	p.l	Tomor Atemor	21/91	1/112	LTO
Anabar	58	p.l	Animwen	21/91	1/112	LTO
Anabar	59	p.l	Animwen	21/91	1/112	LTO
Anabar	65	p.l	Atebobaer	21/91	1/112	LTO
Anetan	7	p.l	Guramit	21/91	1/112	LTO
Anetan	13	p.l	Yubwia	21/91	1/112	LTO
Anetan	15	p.l	Atebena	21/91	1/112	LTO
Anetan	20	p.l	Iyeida	21/91	1/112	LTO
Anetan	133	p.l	Atebao	21/91	1/112	LTO
Anibare	149	p.l	Ueiba	21/91	1/112	LTO
Anibare	160	p.l	Adetereni	97/91	1/112	LTO
Anibare	202	p.l	Anurun	21/91	1/112	LTO
Anibare	238	p.l	Aequara	21/91	1/112	LTO
Anibare	240	p.l	Atemor	21/91	1/112	LTO
Anibare	241	p.l	Maro	21/91	1/112	LTO
Anibare	354	p.l	Akaraeoni	21/91	1/112	LTO
Baitsi	67	p.l	Anuero	21/91	1/112	LTO
Baitsi	76	p.l	Ugino	21/91	1/112	LTO
Buada	131	p.l	Eatetakiwoe	21/91	1/112	LTO
Ewa	35	p.l	Nagon	21/91	1/112	LTO
Ewa	36	p.l	Abongebong	21/91	1/112	LTO
Ewa	37	p.l	Tegang Idageang	21/91	1/112	LTO
Ewa	58	p.l	Beiduada Paeduepe	21/91	1/112	LTO
Ewa	79	p.l	Anemet	21/91	1/112	LTO
Ewa	80	p.l	Anuijo	21/91	1/112	LTO
Ewa	81	p.l	Anuijo	21/91	1/112	LTO
Ewa	93	p.l	Anuijo	21/91	1/112	LTO
Ewa	94	p.l	Ate	21/91	1/112	LTO
Ewa	95	p.l	Anujo	21/91	1/112	LTO
Ewa	162	p.l	Imagemwin	21/91	1/112	LTO
Ijuw	10	p.l	Atebwanijo	21/91	1/112	LTO
Ijuw	18	p.l	Atobwidob	21/91	1/112	LTO

G.N. No. 674 / 2013(cont'd)

Ijuw	85	p.l	Atueo	21/91	1/112	LTO
Ijuw	87	p.l	Iyuwinepe	21/91	1/112	LTO
Ijuw	88	p.l	Ibowini	21/91	1/112	LTO
Ijuw	725	p.l	Atebawo	21/91	1/112	LTO
Meneñ	354	p.l	Atataro	21/91	1/112	LTO
Aiwo	159	c.l	Atubwinarum	21/91	1/420	LTO
Aiwo	413	c.l	Atubwinarum	21/91	1/420	LTO
Boe	6	p.l	-	21/91	1/420	LTO
Boe	73	c.l	-	21/91	1/420	LTO
Meneñ	96	c.l	Irebedi	21/91	1/420	LTO
Meneñ	102	c.l	Irebedi	21/91	1/420	LTO
Meneñ	267	p.l	Atuwuro	21/91	1/420	LTO
Yaren	101	p.l	Atemeroro	21/91	1/420	LTO
Yaren	129	p.l	Aningobwi	21/91	1/420	LTO
Yaren	279	p.l	Atemarar	21/91	1/420	LTO
Yaren	307	p.l	Ataningobwi	21/91	1/420	LTO
Yaren	313	p.l	Atangawak	21/91	1/420	LTO
Anabar	107	c.l	Iaterangija	21/91	1/40	LTO
Anetan	71	c.l	Anuworoija	21/91	1/40	LTO
Ewa	2	c.l	Anora	21/91	1/40	LTO
Ewa	195	c.l	Iatengab	21/91	1/168	LTO
Aiwo	107	c.l	Ianepe	21/91	1/168	LTO
Yaren	260	p.l	Anga	21/91	1/560	LTO
Meneñ	341	p.l	Ibea	84/92	1/1400	LTO
Ewa	89	p.l	Anuero	21/91	17/1960	LTO

G.N. No. 674 / 2013(cont'd)

DETERMINATION OF BENEFICIARIES

2. The Nauru Lands Committee has determined that the beneficiaries of the late **LEO KEKE** are:-
 (a) In respect of the land shown in paragraph 1 above.

DISTRICT	PORTION NO.	NAME OF LAND	BENEFICIARIES	SHARE
Meneñ	44	Awidainging	Agnes Debao	1/72
			Ludwig Keke	1/72
			Virginia Keke	1/72
			Lucy Joy(est of.)	1/72
			Brendoski Limen	2/135
			Kikina Agogenang	1/288
			Stella Agogenang	1/288
			Romina Amwano	5/576
			Alphonso Stephen	1/576
			Gregory Adonis D. Stephen	1/576
			Christopher Stephen	1/576
			Nissa Peo	1/576
			Solana Akua	1/576
			Raines Stephen	1/576
			Marcus A. Stephen	1/576
			Cecilia Cain(LTO)	1/1080
			Lily Cain(LTO)	1/1080
			Kerry Cain(LTO)	1/1080
			Ella Cain	1/1080
			Patrick Cain	1/1080
			Michael Cain	1/1080
			Sharon Kam	1/1080
			Joseph Cain	1/1080
			Cecilia Tsitsi	1/1080
			Mariae Cain	1/1080
			Calistus Cain	1/1080
			Ann-Marie Thoma	1/1080
		Cecilia T (T/Tee)	(Jessen Cain)	1/5400
			(Keith Holder)	1/5400
			(Conroy Cain)	1/5400
		Ann-Marie T(T/Tee)	(Bridget Cain)	1/5400
			(Jymika Cain)	1/5400

G.N. No. 674 / 2013(cont'd)

			Dominic Cain	1/12960
			Purcella Engar	1/12960
			Purphina Hartman	1/12960
			Posie Jeremiah	1/12960
			Purcellia Scotty	1/12960
			Sue Uepa	1/12960
			Lianne Bop	1/12960
			JJ Anson Bop	1/12960
			Joanne Bop	1/12960
			Madirah Bop	1/12960
			Levi Cain	1/12960
			Clivas Bop	1/12960
Meneñ	285	Atawidawo	Agnes Debao	1/144
			Ludwig Keke	1/144
			Virginia Keke	1/144
			Lucy Joy(est of.)	1/144
			Brendoski Limen	1/135
			Kikina Agogenang	1/576
			Stella Agogenang	1/576
			Romina Amwano	5/1152
			Alphonso Stephen	1/1152
			Gregory Adonis D. Stephen	1/1152
			Christopher Stephen	1/1152
			Nissa Peo	1/1152
			Solana Akua	1/1152
			Raines Stephen	1/1152
			Marcus A. Stephen	1/1152
			Cecilia Cain(LTO)	1/2160
			Lily Cain(LTO)	1/2160
			Kerry Cain(LTO)	1/2160
			Ella Cain	1/2160
			Patrick Cain	1/2160
			Michael Cain	1/2160
			Sharon Kam	1/2160
			Joseph Cain	1/2160
			Cecilia Tsitsi	1/2160
			Mariae Cain	1/2160
			Calistus Cain	1/2160

G.N. No. 674 / 2013(cont'd)

			Ann-Marie Thoma	1/2160
		Cecilia T (T/Tee)	(Jessen Cain)	1/10800
			(Keith Holder)	1/10800
			(Conroy Cain)	1/10800
		Ann-Marie T(T/Tee)	(Bridget Cain)	1/10800
			(Jymika Cain)	1/10800
			Dominic Cain	1/25920
			Purcella Engar	1/25920
			Purphina Hartman	1/25920
			Posie Jeremiah	1/25920
			Purcelia Scotty	1/25920
			Sue Uepa	1/25920
			Lianne Bop	1/25920
			JJ Anson Bop	1/25920
			Joanne Bop	1/25920
			Madirah Bop	1/25920
			Levi Cain	1/25920
			Clivas Bop	1/25920
Yaren	251	Anoror	As for portion no.285 p.l	Meneñ
Baitsi	116	Agoro	Agnes Debao	1/216
			Ludwig Keke	1/216
			Virginia Keke	1/216
			Lucy Joy(est of.)	1/216
			Brendoski Limen	2/405
			Kikina Agogenang	1/864
			Stella Agogenang	1/864
			Romina Amwano	5/1728
			Alphonso Stephen	1/1728
			Gregory Adonis D. Stephen	1/1728
			Christopher Stephen	1/1728
			Nissa Peo	1/1728
			Solana Akua	1/1728
			Raines Stephen	1/1728
			Marcus A. Stephen	1/1728
			Cecilia Cain(LTO)	1/3240
			Lily Cain(LTO)	1/3240
			Kerry Cain(LTO)	1/3240
			Ella Cain	1/3240
			Patrick Cain	1/3240
			Michael Cain	1/3240

G.N. No. 674 / 2013(cont'd)

			Sharon Kam	1/3240
			Joseph Cain	1/3240
			Cecilia Tsitsi	1/3240
			Mariae Cain	1/3240
			Calistus Cain	1/3240
			Ann-Marie Thoma	1/3240
		Cecilia T (T/Tee)	(Jessen Cain)	1/16200
			(Keith Holder)	1/16200
			(Conroy Cain)	1/16200
		Ann-Marie T(T/Tee)	(Bridget Cain)	1/16200
			(Jymika Cain)	1/16200
			Dominic Cain	1/38880
			Purcella Engar	1/38880
			Purphina Hartman	1/38880
			Posie Jeremiah	1/38880
			Purcellia Scotty	1/38880
			Sue Uepa	1/38880
			Lianne Bop	1/38880
			JJ Anson Bop	1/38880
			Joanne Bop	1/38880
			Madirah Bop	1/38880
			Levi Cain	1/38880
			Clivas Bop	1/38880
Buada	357	Yauriaria	As for portion no.116 c.l	Baitsi
Denigomodu	1	Aenin	-do-	
Denigomodu	18	Ainganga	-do-	
Meneñ	265	Anemet	-do-	
Meneñ	268	Atuwuro	-do-	
Meneñ	278	Beradum	-do-	
Yaren	39	Yaren, Apoe	-do-	
Yaren	75	Idadaria	-do-	
Yaren	153	Iatobi	-do-	
Yaren	154	Ubadu	-do-	
Yaren	157	Ubadu	-do-	
Yaren	165	Ibwenape	-do-	
Yaren	172	Ananumwi	-do-	
Yaren	191	Attar	-do-	
Yaren	201	Iren	-do-	
Yaren	202	Ijako	-do-	
Yaren	204	Iren	-do-	

G.N. No. 674 / 2013(cont'd)

Yaren	205	Iren	-do-	
Yaren	285	Ubadu	-do-	
Yaren	294	Attar	-do-	
Yaren	89	Atomo	Agnes Debao	1/288
			Ludwig Keke	1/288
			Virginia Keke	1/288
			Lucy Joy(est of.)	1/288
			Brendoski Limen	1/270
			Kikina Agogenang	1/1152
			Stella Agogenang	1/1152
			Romina Amwano	5/2304
			Alphonso Stephen	1/2304
			Gregory Adonis D. Stephen	1/2304
			Christopher Stephen	1/2304
			Nissa Peo	1/2304
			Solana Akua	1/2304
			Raines Stephen	1/2304
			Marcus A. Stephen	1/2304
			Cecilia Cain(LTO)	1/4320
			Lily Cain(LTO)	1/4320
			Kerry Cain(LTO)	1/4320
			Ella Cain	1/4320
			Patrick Cain	1/4320
			Michael Cain	1/4320
			Sharon Kam	1/4320
			Joseph Cain	1/4320
			Cecilia Tsitsi	1/4320
			Mariae Cain	1/4320
			Calistus Cain	1/4320
			Ann-Marie Thoma	1/4320
		Cecilia T (T/Tee)	(Jessen Cain)	1/21600
			(Keith Holder)	1/21600
			(Conroy Cain)	1/21600
		Ann-Marie T(T/Tee)	(Bridget Cain)	1/21600
			(Jymika Cain)	1/21600
			Dominic Cain	1/51840
			Purcella Engar	1/51840
			Purphina Hartman	1/51840
			Posie Jeremiah	1/51840
			Purcelia Scotty	1/51840

G.N. No. 674 / 2013(cont'd)

			Sue Uepa	1/51840
			Lianne Bop	1/51840
			JJ Anson Bop	1/51840
			Joanne Bop	1/51840
			Madirah Bop	1/51840
			Levi Cain	1/51840
			Clivas Bop	1/51840
Yaren	90	Atomo	As for portion no.89 c.l	Yaren
Yaren	303	Ugiangang	Agnes Debao	1/432
			Ludwig Keke	1/432
			Virginia Keke	1/432
			Lucy Joy(est of.)	1/432
			Brendoski Limen	1/405
			Kikina Agogenang	1/1728
			Stella Agogenang	1/1728
			Romina Amwano	5/3456
			Alphonso Stephen	1/3456
			Gregory Adonis D. Stephen	1/3456
			Christopher Stephen	1/3456
			Nissa Peo	1/3456
			Solana Akua	1/3456
			Raines Stephen	1/3456
			Marcus A. Stephen	1/3456
			Cecilia Cain(LTO)	1/6480
			Lily Cain(LTO)	1/6480
			Kerry Cain(LTO)	1/6480
			Ella Cain	1/6480
			Patrick Cain	1/6480
			Michael Cain	1/6480
			Sharon Kam	1/6480
			Joseph Cain	1/6480
			Cecilia Tsitsi	1/6480
			Mariae Cain	1/6480
			Calistus Cain	1/6480
			Ann-Marie Thoma	1/6480
		Cecilia T (T/Tee)	(Jessen Cain)	1/32400
			(Keith Holder)	1/32400
			(Conroy Cain)	1/32400
		Ann-Marie T(T/Tee)	(Bridget Cain)	1/32400
			(Jymika Cain)	1/32400

G.N. No. 674 / 2013(cont'd)

			Dominic Cain	1/77760
			Purcella Engar	1/77760
			Purphina Hartman	1/77760
			Posie Jeremiah	1/77760
			Purcellia Scotty	1/77760
			Sue Uepa	1/77760
			Lianne Bop	1/77760
			JJ Anson Bop	1/77760
			Joanne Bop	1/77760
			Madirah Bop	1/77760
			Levi Cain	1/77760
			Clivas Bop	1/77760
Aiwo	81	Ubadoge	Agnes Debao	1/648
			Ludwig Keke	1/648
			Virginia Keke	1/648
			Lucy Joy(est of.)	1/648
			Brendoski Limen	2/1215
			Kikina Agogenang	1/2592
			Stella Agogenang	1/2592
			Romina Amwano	5/5184
			Alphonso Stephen	1/5184
			Gregory Adonis D. Stephen	1/5184
			Christopher Stephen	1/5184
			Nissa Peo	1/5184
			Solana Akua	1/5184
			Raines Stephen	1/5184
			Marcus A. Stephen	1/5184
			Cecilia Cain(LTO)	1/9720
			Lily Cain(LTO)	1/9720
			Kerry Cain(LTO)	1/9720
			Ella Cain	1/9720
			Patrick Cain	1/9720
			Michael Cain	1/9720
			Sharon Kam	1/9720
			Joseph Cain	1/9720
			Cecilia Tsitsi	1/9720
			Mariae Cain	1/9720
			Calistus Cain	1/9720
			Ann-Marie Thoma	1/9720
		Cecilia T (T/Tee)	(Jessen Cain)	1/48600

G.N. No. 674 / 2013(cont'd)

			(Keith Holder)	1/48600
			(Conroy Cain)	1/48600
		Ann-Marie T(T/Tee)	(Bridget Cain)	1/48600
			(Jymika Cain)	1/48600
			Dominic Cain	1/116640
			Purcella Engar	1/116640
			Purphina Hartman	1/116640
			Posie Jeremiah	1/116640
			Purcellia Scotty	1/116640
			Sue Uepa	1/116640
			Lianne Bop	1/116640
			JJ Anson Bop	1/116640
			Joanne Bop	1/116640
			Madirah Bop	1/116640
			Levi Cain	1/116640
			Clivas Bop	1/116640
Boe	88	Anomongiren	As for portion no.81 c.1	Aiwo
Buada	55	Ijakabab	-do-	
Yaren	330	Atubwinumor	-do-	
Anabar	106	Aduba	Earnest G. Stephen	1/168
			Lise M. E. Dube	1/168
			Patricia E. Stephen	1/168
			Alice M. Deiranauw	1/168
			Lana D. Jeremiah	1/168
			Paul Dunang Demauna (LTO)	1/168
Anetan	52	Anobarouw	As for portion no.106 c.1	Anabar
Anetan	68	Anuwuroija	-do-	
Anetan	92	Otsinuwo	-do-	
Anetan	97	Mererauwa	-do-	
Anetan	103	Eatibibido	-do-	
Anetan	109	Anetsiw	-do-	
Anetan	128	Atungi	-do-	
Baitsi	89	Mangadab	-do-	
Baitsi	90	Mangadab	-do-	
Ewa	3	Mererauwa	-do-	
Ewa	138	Mererauwa	-do-	
Ewa	141	Medang	-do-	
Ewa	152	Aeabab	-do-	
Ewa	156	Bogoworowor	-do-	
Ewa	170	Ijungureb	-do-	

G.N. No. 674 / 2013(cont'd)

Ewa	184	Madang	-do-	
Ijuw	46	Bogomoruw	-do-	
Ijuw	55	Eateanibain	-do-	
Ijuw	60	Aro	-do-	
Ijuw	69	Ijunguro	-do-	
Ijuw	70	Iatoborobor	-do-	
Ijuw	73	Areruwi	-do-	
Ijuw	103	Anumwimwi	-do-	
Ijuw	124	Anebwor	-do-	
Ijuw	705	Anebar	-do-	
Meneñ	4	Yaeow	-do-	
Meneñ	13	Yaeow	-do-	
Meneñ	187	Anaoe	-do-	
Meneñ	189	Anaoe	-do-	
Meneñ	191	Anaoe	-do-	
Meneñ	357	Anaoe	-do-	
Yaren	134	Ijongin	-do-	
Yaren	331	Atubwinumor	-do-	
Anetan	102	Ronawi	Earnest G. Stephen	1/336
			Lise M. E. Dube	1/336
			Patricia E. Stephen	1/336
			Alice M. Deiranauw	1/336
			Lana D. Jeremiah	1/336
			Paul Dunang Demauna (LTO)	1/336
Boe	43	Adenera	As for portion no.102 c.1	Anetan
Buada	27	Rubwinija	-do-	
Ewa	6	Mangadab	-do-	
Ijuw	17	Aneborara	-do-	
Ijuw	121	Anebwor	-do-	
Anabar	7	Tararo	Earnest G. Stephen	1/672
			Lise M. E. Dube	1/672
			Patricia E. Stephen	1/672
			Alice M. Deiranauw	1/672
			Lana D. Jeremiah	1/672
			Paul Dunang Demauna (LTO)	1/672
Anabar	17	Arinugogo	-do-	
Anabar	21	Atetirir	-do-	
Anabar	24	Arinogogo	-do-	
Anabar	26	Atibenar	-do-	
Anabar	34	Anakarikik	-do-	

G.N. No. 674 / 2013(cont'd)

Anabar	36	Queirang	-do-	
Anabar	49	Ibweruru	-do-	
Anabar	55	Tomor Atemor	-do-	
Anabar	58	Animwen	-do-	
Anabar	59	Animwen	-do-	
Anabar	65	Atebobaer	-do-	
Anetan	7	Guramit	-do-	
Anetan	13	Yubwia	-do-	
Anetan	15	Atebena	-do-	
Anetan	20	Iyeida	-do-	
Anetan	133	Atebao	-do-	
Anibare	149	Ueiba	-do-	
Anibare	160	Adetereni	-do-	
Anibare	202	Anurun	-do-	
Anibare	238	Aequara	-do-	
Anibare	240	Atemor	-do-	
Anibare	241	Maro	-do-	
Anibare	354	Akaraeoni	-do-	
Baitsi	67	Anuero	-do-	
Baitsi	76	Ugino	-do-	
Buada	131	Eatetakiwoe	-do-	
Ewa	35	Nagon	-do-	
Ewa	36	Abongebong	-do-	
Ewa	37	Tegang Idageang	-do-	
Ewa	58	Beiduada Paeduepe	-do-	
Ewa	79	Anemet	-do-	
Ewa	80	Anuijo	-do-	
Ewa	81	Anuijo	-do-	
Ewa	93	Anuijo	-do-	
Ewa	94	Ate	-do-	
Ewa	95	Anujo	-do-	
Ewa	162	Imagemwin	-do-	
Ijuw	10	Atebwanijo	-do-	
Ijuw	18	Atobwidob	-do-	
Ijuw	85	Atueo	-do-	
Ijuw	87	Iyuwinepe	-do-	
Ijuw	88	Ibowini	-do-	
Ijuw	725	Atebawo	-do-	
Meneñ	354	Atataro	-do-	
Aiwo	159	Atubwinarum	Earnest G. Stephen	1/2520

G.N. No. 674 / 2013(cont'd)

			Lise M. E. Dube	1/2520
			Patricia E. Stephen	1/2520
			Alice M. Deiranauw	1/2520
			Lana D. Jeremiah	1/2520
			Paul Dunang Demauna (LTO)	1/2520
Aiwo	413	Atubwinarum	As for portion no.159 c.1	Aiwo
Boe	6	-	-do-	
Boe	73	-	-do-	
Meneñ	96	Irebedi	-do-	
Meneñ	102	Irebedi	-do-	
Meneñ	267	Atuwuro	-do-	
Yaren	101	Atemeroro	-do-	
Yaren	129	Aningobwi	-do-	
Yaren	279	Atemarar	-do-	
Yaren	307	Ataningobwi	-do-	
Yaren	313	Atangawak	-do-	
Anabar	107	Iaterangija	Earnest G. Stephen	1/840
			Lise M. E. Dube	1/840
			Patricia E. Stephen	1/840
			Alice M. Deiranauw	1/840
			Lana D. Jeremiah	1/840
			Paul Dunang Demauna (LTO)	1/840
Anetan	71	Anuworoija	As for portion no.107 c.1	Anabar
Ewa	2	Anora	-do-	
Ewa	195	Iatengab	Earnest G. Stephen	1/1008
			Lise M. E. Dube	1/1008
			Patricia E. Stephen	1/1008
			Alice M. Deiranauw	1/1008
			Lana D. Jeremiah	1/1008
			Paul Dunang Demauna (LTO)	1/1008
Aiwo	107	Ianepe	As for portion no.195 c.1	Ewa
Yaren	260	Anga	Earnest G. Stephen	1/3360
			Lise M. E. Dube	1/3360
			Patricia E. Stephen	1/3360
			Alice M. Deiranauw	1/3360
			Lana D. Jeremiah	1/3360
			Paul Dunang Demauna (LTO)	1/3360
Meneñ	341	Ibea	Earnest G. Stephen	1/8400
			Lise M. E. Dube	1/8400
			Patricia E. Stephen	1/8400

G.N. No. 674 / 2013(cont'd)

			Alice M. Deiranauw	1/8400
			Lana D. Jeremiah	1/8400
			Paul Dunang Demauna (LTO)	1/8400
Ewa	89	Anuero	Earnest G. Stephen	17/11760
			Lise M. E. Dube	17/11760
			Patricia E. Stephen	17/11760
			Alice M. Deiranauw	17/11760
			Lana D. Jeremiah	17/11760
			Paul Dunang Demauna (LTO)	17/11760

NOTE: Those who disagree with the above distribution may appeal to the Supreme Court Registry within 21 days of the publication of the Government Gazette Notice.

TYRAN CAPELLE
CHAIRPERSON- NAURU LANDS COMMITTEE

G.N. No. 675 / 2013

LAND DETERMINATION (AMENDMENT)

Portion no. 189, G.N.No. 502/2012, subdivided into two portions by virtue of family agreement.

DISTRICT	PORTION NO.	TYPE OF LAND	NAME OF LAND	REFERENCE	FORMER OWNER	SHARE	PRESENT OWNERS	SHARES
Boe	189	c.l	Ubwewewi	LRB page 71	Auwobo	ALL	Gorodu Auwobo	1/2
							Deboge Batsiua	1/56
							Eidanrio Batsiua	1/56
							Solomon Batsiua	1/56
							Eidagan Batsiua	1/56
							Amadeus Batsiua	1/56
							Jean Batsiua(LTO)	1/56
							C-Jon Batsiua	1/224
							Nichole Batsiua	1/224
							Jacob Jack Batsiua	1/224
							Ata Winston Batsiua	1/224
							Irene Tatu	1/40
							Julian Capelle	1/40
							Ruby Cecil	1/40
							Poincianna Audoa	1/40
							Terrigen Mau	1/40
							Dane Amandus	1/32

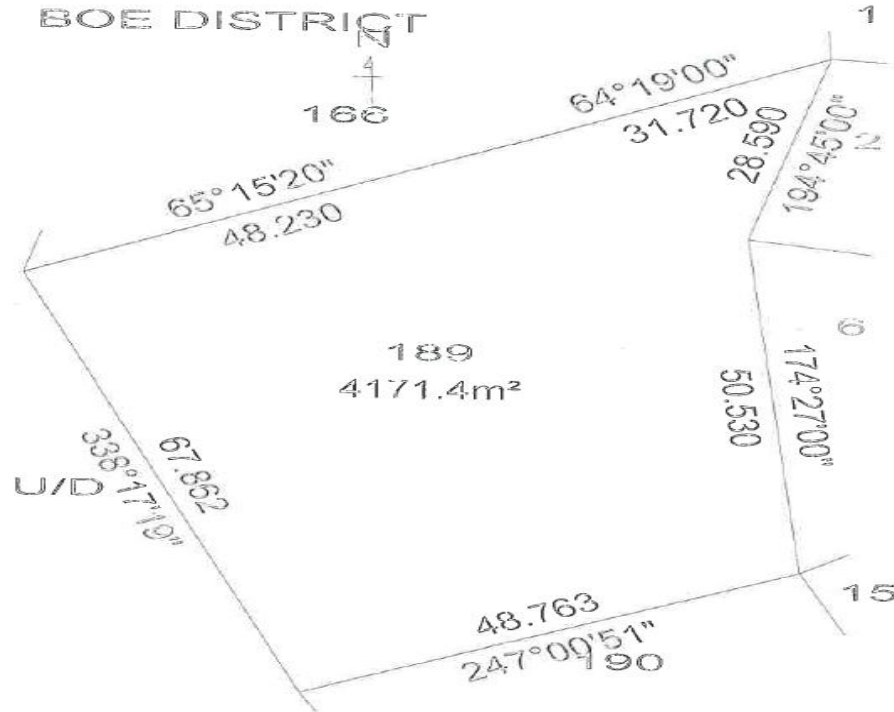
G.N. No. 675 / 2013(cont'd)

							Esmeralda Harris (LTO)	1/64
							Ivy Ephraim(LTO)	1/64
							Fina Spanner	1/128
							Nova Amandus	1/128
							Chris Amandus	1/128
							Delvina Amandus	1/128
							Aramwaneit Amandus	1/128
							Manna Hedmon	1/128
							Lalupe Hedmon	1/128
							Dagauwe Hedmon	1/128
							Tonilla Brechtefeld	1/24
							Kane Amandus	1/24
						Tonilla Brechtefeld(T/Tee)	→ Tahlima Whippy	1/24

NOTE: Those who disagree with the above determination may appeal to the Supreme Court Registry within 21 days of the publication of the Government Notice.

TYRAN CAPELLE
CHAIRPERSON- NAURU LANDS COMMITTEE

G.N. No. 675 / 2013(cont'd)



[Handwritten signature]
11/9/13

LAND DETERMINATION (AMENDMENT)

Portion no. 190, G.N.No. 502/2012, subdivided into two portions by virtue of family agreement.

DISTRICT	PORTION NO.	TYPE OF LAND	NAME OF LAND	REFERENCE	FORMER OWNER	SHARE	PRESENT OWNERS	SHARES	PROPOSED OWNERS	SHARES
Boe	190	c.l	Ubwewewi	LRB page 71	Auwobo	ALL	Dorothy Herman	1/3		
							Abinedage Herman	1/9	Favae Herman	1/18
									Autasia Herman(LTO)	1/18
									G/N 45/89	
							Helda Depoudu	1/9	Sarai Depoudu	1/27
									Eidingeow Depoudu	1/27
									Sandi Hubert	1/27
									G/N 60/82	
							Kenas Aroi	1/9	Kerry Cain	1/45
									Mike Aroi	1/45
									Kim Aroi	1/45
									Malcolm Aroi	1/45
							Shiela Solomon(T/Tee)		(Dogabebe Aroi)	1/45
									G/N 74/00	
							Jerry Waidabu	1/3	Barbara Tamakin	1/18
									Godfrey Waidabu	1/18
									Hilma Cawley	1/18
									Dorothy Deireragea	1/18

No. 143 11th September, 2013 Nauru

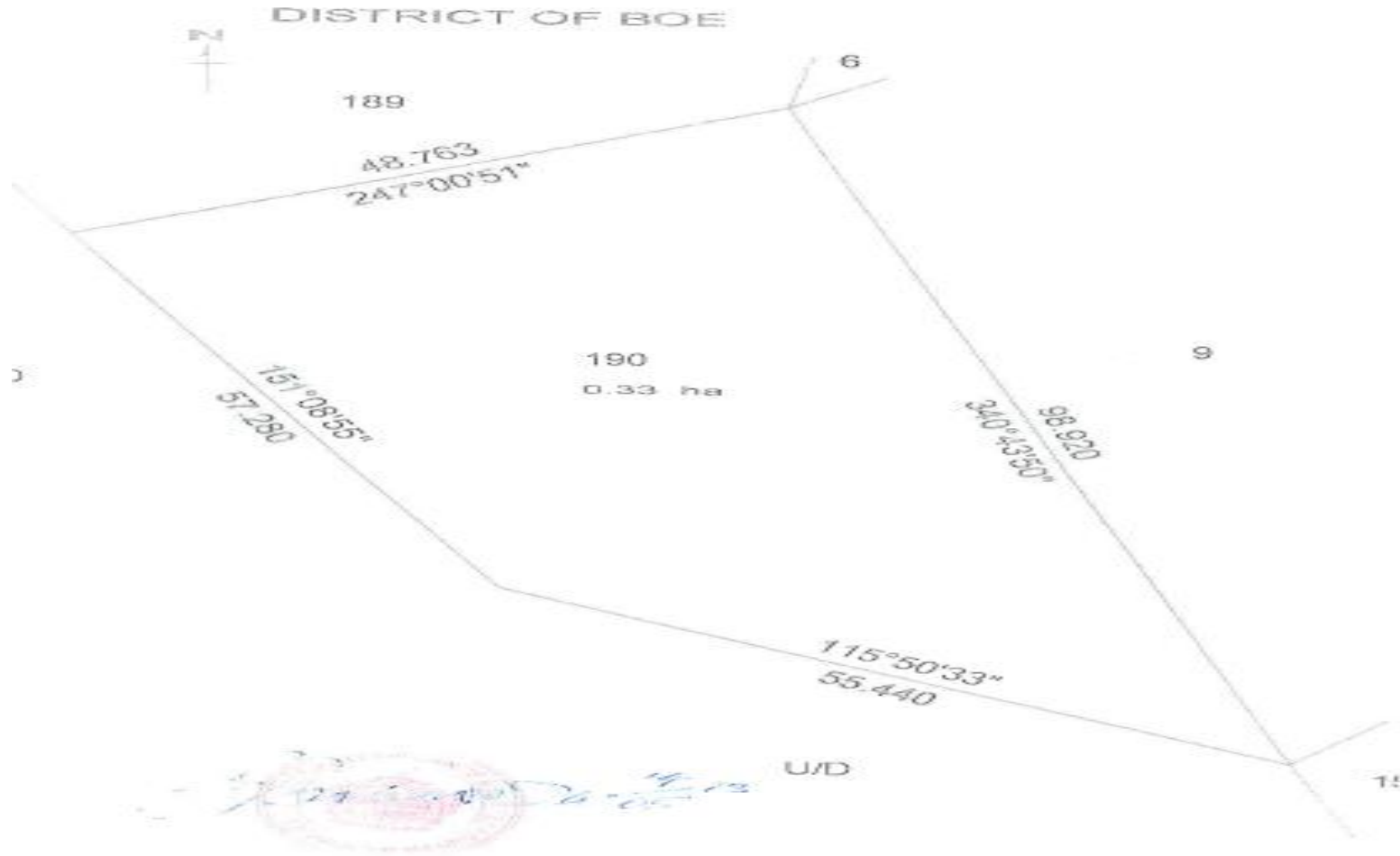
G.N. No. 676 / 2013(cont'd)

							Agnes Harris	1/6	Carren Satto	1/72
									Baron Waqa	1/72
									Micha Waqa	1/72
									Luke Waqa	1/72
									Irving Harris	1/72
									Ruth Scotty	1/72
									Hector Harris	1/72
									Roy Harris	1/72
									Jima Harris	1/72
									Ruby-June Harris	1/72
									Ricka Raidinen	1/72
							Rick Raidinen (T/Tee)		Kahiko Harris	1/72
									G/N 32/08	

NOTE: Those who disagree with the above determination may appeal to the Supreme Court Registry within 21 days of the publication of the Government Notice.

TYRAN CAPELLE
HAIRPERSON- NAURU LANDS COMMITTEE

G.N. No. 676 / 2013(cont'd)



G.N. No. 677 / 2013

DETERMINATION OF BENEFICIARIES

DISTRICT	TYPE OF LAND	NAME OF LAND	PORTION NO.	FORMER OWNER	SHARE	REF.	PROPOSED OWNER	SHARE	REF.	BENEFICIAIRES	SHARE
Aiwo	p.l	Anibubu	300	Eigaga	All	Bpc blk 28	Adimim Deduna	1/7	61/80	Ronald Deduna	1/24
									12/92	May Tevaki	1/24
										Beulah Deduna	1/24
										Roderick Deduna	1/96
										Roamina Deduna	1/96
										Asher Deduna	1/96
										Phoebe Kam	1/96
							Doradeab Deduna	1/7	27/83	Bridelia Edward	1/63
										Erwin Deneid Deduna	1/63
										Lydia Eigogo Deduna	1/63
										Rennon L. A. Deduna	1/63
										Jess Bain R. Deduna	1/63
										Janella Atsime	1/315
										Jayleen Menke	1/315
										Jena Deduna	1/315
										Jason Deduna	1/315
										Juran Scotty	1/315
										Brodean Deduna	1/63
							Eamwemwe Bernicke	1/7	70/92	Trevor Bernicke	1/112
										Verna Dawn Caleb	1/112
										Nona Thoma	1/224
										Shadlog Bernicke	1/224
										Alwyn Bernicke	1/224
										Sars Bernicke	1/224
										Justin Bernicke	1/336

G.N. No. 677 / 2013(cont'd)

											Odette Demaure	1/336
											Austin Bernicke	1/336
											Ninette Bernicke	1/336
											Trinette Bernicke	1/336
											Yvette Bill (LTO)	1/336
											Florence Bernicke(LTO)	1/56
											Bervena Adeang	1/392
											Dandylion Obeta	1/392
											Sukie Adeang	1/392
											Leon Adeang	1/392
											Annette Adeang	1/392
											Jon Adeang	1/392
											Melba Adeang	1/1568
											Geneva Adeang	1/1568
											Syntyche Adeang	1/1568
											Kalina Adeang(LTO)	1/1568
											Otto Whippy (LTO)	1/168
									Otto W		Corazone Dabana	1/168
									(T/Tee)		Jenny Dabana	1/168
											Giovanni Bernicke	1/112
											Jason N. Agir (LTO)	1/112
											Renata Bernicke	1/336
											Sharlyn Bernicke	1/336
											Amelia Dabana	1/336
									Renata		Jenny Dabana	1/336
									(T/Tee)		Corazone Dabana	1/336
											Ormini Dabana	1/336

G.N. No. 677 / 2013(cont'd)

							Enna Gadabu	1/7	54/10	Raymond D. Gadabu	1/35
										Ruth Eagodea Agio	1/35
										Tyran Eibinoa Capelle	1/35
										Peta Eiredeben Gadabu	1/35
										Ipia Gadabu	1/105
										Clarissa Scotty	1/105
										Darice Bari	1/105
							Milka Denitage	1/7	27/90	Dennis D. Denitage	1/49
										Zorrina Denitage	1/49
										Silas Denitage	1/49
										Stephanie Thoma	1/49
										Christiana Detenamo	1/49
										Brian Denitage	4/147
										Talvic Thoma	1/294
										Eobob Denitage	1/294
										Madison Denitage	1/294
										Kathreah Denitage	1/294
							Lilac Dediya	1/7	51/82	Ruby E. Thoma	1/63
										James S. Japhet	1/63
										Adonis Dediya	1/63
										Euchalista Tom	1/63
										Clifford Eobob	1/315
										Corinne Joram	1/315
										Sylvanna Vorbach	1/315
										Jason Phillip(LTO)	1/315
										Wilhelmina Eobob(LTO)	1/315
										Vivo Agigo	1/126
										Villas Agigo	1/126

G.N. No. 677 / 2013(cont'd)

										Dax Dediya	1/315	
										Jansline Bam	1/315	
										Dabugin Dediya	1/315	
										Lilac Menke	1/315	
										Maverick Dediya	1/315	
										Liviatta Tom	1/315	
										Lavender Adeang	1/315	
										Twaine Japhet	1/315	
										Lanieta Japhet	1/315	
										Susan Japhet(LTO)	1/315	
										Liviatta Tom	1/126	
										Daren Adeang	1/126	
										James S. Japhet(LTO)	1/1512	
										Adonis Dediya (LTO)	1/1512	
										Euchalista Tom(LTO)	1/1512	
										Ruby E. Thoma (LTO)	1/1512	
										Vivien Dediya (LTO)	1/1512	
										Linke Eobob	1/7	
										1/63	Rotsiouda Eobob	1/42
										Linke Eobob	1/42	
										Madrina Scotty	1/126	
										Jessie Duburiya	1/126	
										Paul Renzo Jnr	1/126	
										Sonia Garabwan	1/126	
										Kitai Renzo	1/126	
										Milo Renzo (LTO)	1/126	
										Syntyche Eingeiya Scotty	1/147	
										Austin Ibi diaren Eobob	1/147	
										Lavender Dick	1/147	

No. 143 11th September, 2013 Nauru

G.N. No. 677 / 2013(cont'd)

										Lisa E.D. Hiram	1/147
										Titus Dem Eobob	1/147
										Esma Ederaine Agir	1/147
										Florine Lynette Capelle	1/147

NOTE: Those who disagree with the above distribution may appeal to the Supreme Court Registry within 21 days of the publication of the Government Gazette Notice.

ITURINMWAR DIRINGA
ACTING VICE CHAIRMAN
NAURU LANDS COMMITTEE

AMENDMENT ADDENDUM

The Nauru Lands Committee revoked Gazette No. 128, G. N. No. 626/2013, re-determination of Amwange, Portion No. 374 p.l Anibare due to shares and exclusion of other beneficiaries.

DISTRICT	TYPE OF LAND	PORTION NO.	NAME OF LAND	FORMER OWNER	SHARE	PROPOSED OWNERS	SHARE	BENEFICIARIES	SHARES
Anibare	p.l	374	Amwange	Epera	ALL	Otto	1/3	Nellinda Deidenang	4/27
								Nyoka Bill	4/27
								Angelo Otto	1/27
						Eididog	1/3	Drusky Dabwadauw	1/45
								Norma Deduna	1/90
								Jason Deduma	1/90
								Jorinda Dabwadauw	1/270
								Jorane Timothy	1/270
								Jevalina Hemendez	1/270
								Janson Hemendez	1/270
								Jezebel Hemendez	1/270
								Jojo Agege	1/270
								Ross Dengea	1/45
								Roache Iga	1/45
								Rocky Iga	1/45
								Rick Tom	1/30
								Kemp Eoe	1/30
								Enid Olsson	1/75
								Jicky Leekum Iga	1/75
								Victor Lami Iga	1/75

G.N. No. 678 / 2013(cont'd)

								Monica Iga (LTO)	1/75
								Deigo Garoa	1/75
								Endica Detaradage	1/165
								Roxanna Bill	1/165
								Moscana Audoa	1/165
								Winna Akiki	1/165
								Teresa Gadeanang	1/165
								Anton Akiki	1/330
								Sheryl Iga	1/330
								John Kaisala	1/660
								Benhur Kaisala	1/660
						John K(T/Tee)		(Rosa Misilusi)	1/660
								(Noddie Melau)	1/660
								Eididog Akubor	1/660
								Taake G. Henty	1/660
								Josephine Henty	1/660
								Annie G. Henty	1/660
								Lee-Marie Deduna	1/990
								Peter Atsime	1/990
								Ledward Atsime	1/990
								Angelo Atsime	1/990
								Mizra Atsime	1/990
								Michael Atsime	1/990
								Madonna Iga	1/990
								Veronica Iga	1/990
								Glory Iga	1/990
								Marlina Iga	1/990
						Oiyen I(T/Tee)		(Joseph Iga)	1/990

G.N. No. 678 / 2013(cont'd)

								Oiyen Iga	1/990
								Mandy Amwano	1/1155
								Goski Amwano	1/1155
								Angelina Temaki	1/1155
								Clara Agir	1/1155
								Shandell Amwano	1/1155
								Rose Amwano	1/1155
								Kakiko Amwano	1/1155
						Anna	1/3	Miguel Neneiya(est of.)	1/48
								Moses Neneiya	1/48
								Noah Neneiya	1/48
								Catherine Neneiya	1/48
								Nora Neneiya	1/48
								Lea Neneiya	1/48
								Sieda Neneiya	1/48
								Bobwan Kapua	1/144
								Peter Kapua	1/144
								Gairoe Kapua	1/144
								Gary Dabana	1/66
								Peter B. Dabana	1/66
								Cora Dabana	1/66
								Patricia V. Kepae	1/66
								Pamela Dabana	1/66
								Eina Menke	1/66
								Delmoran Ratabwi	1/66
								Yankee Ratabwi	1/66
								Daniye Dabana	1/132

G.N. No. 678 / 2013(cont'd)

								Raelene S Thoma	1/132
								Riot Ratabwiy	2/495
								Courages Ratabwiy	2/495
								Helen Ratabwiy	2/495
								Leilani Ratabwiy	1/330
								Tagner Ratabwiy	1/594
								Dacor Ratabwiy	1/594
								Joni Ratabwiy	1/594
								Louella Agir	1/594
								Lavender Ratabwiy	1/594
								Tommy Ratabwiy	1/594
								Valencia Quadina	1/594
								Dacron Ratabwiy	1/594
								Rae Ratabwiy (LTO)	1/594

NOTE 1: Any person who is dissatisfied with the determination of the above may appeal to the Supreme Court Registry within 21 days of the publication of this notice.

TYRAN CAPELLE
CHAIRPERSON- NAURU LANDS COMMITTEE
