



REPUBLIC OF NAURU  
GOVERNMENT GAZETTE  
PUBLISHED BY AUTHORITY

No.3.

19th January 2000

Nauru

G.N.No. 12/2000

PUBLIC SERVICE ACT - 1998  
SECTION 37, SUBSECTIONS 1,2 AND 3

PUBLIC HOLIDAYS

IT IS NOTIFIED for general information that pursuant to Section 37, Sub-Sections (1), (2) and (3) of the Public Service Act 1998, the following days will be observed as Public Holidays for year 2000 by officers and employees of the Public Service:-

01st January, 2000	(Saturday)	New Year's Day
31st January, 2000	(Monday)	Independence Day
1st February, 2000	(Tuesday)	Independence Day
21st April, 2000	(Friday)	Good Friday
24th April, 2000	(Monday)	Easter Monday
25th April, 2000	(Tuesday)	Easter Tuesday
17th May, 2000	(Wednesday)	Constitution Day
26th October, 2000	(Thursday)	Angam Day
25th December, 2000	(Monday)	Christmas Day
26th December, 2000	(Tuesday)	Boxing Day

Whenever a day specified above, except the Independence Day and Christmas Day, falls on a Saturday or a Sunday, the following Monday will be a holiday.

Whenever Independence Day or Christmas Day falls on a Saturday or a Sunday, the following Monday and Tuesday are holidays.

DATED this 19th day of January, 2000.

MATHEW BATSIUA  
ACTING CHIEF SECRETARY

No.3.

19th January 2000

Nauru

G.N.No.13/2000

PUBLIC SERVICE ACT - 1998  
VACANCY SECTION 15

Applications are invited from both inside and outside the Public Service for appointment, promotion or transfer to the following position :-

DEPARTMENT OF HEALTH

- POSITION** : ASSISTANT HEALTH EDUCATOR  
Position will be directly responsible to the Healthy Island Plan Co-ordinator (HIPC) in the absence of the Principal Health Educator.
- SALARY** : \$11525 - \$12254pa (T3/4)
- DUTIES** : Must have completed secondary school equivalent or higher.  
Must have experience in the field of education and Teaching.  
Minimum of two years as a public servant.  
Must have the initiative and be able to work alone.  
Must be able to speak, converse and read Nauruan and English Language and freely associate with people of various ethnicity.  
Must be willing to travel abroad for training and self-development.  
Computer knowledge an advantage.  
Must be neat and of sober habits with good a record of attendance at previous place of employment.
- QUALIFICATION EXPERIENCE** : Assist with the HIPC in conducting community and school health evaluation.  
Conduct in Nauruan Language health education and information in the community, hospital and schools settings.  
Prepared to travel abroad and spend time away from home to augment knowledge and skills in health education and information.  
To perform other related duties as required.

---

No.3.

19th January 2000

Nauru

---

G.N.No.13/2000 (cont'd)

Applications should be lodged in writing stating name, age and qualifications, with the Chief Secretary, not later than Friday 28th January, 2000.

**MATHEW BATSIUA**  
**ACTING CHIEF SECRETARY**

---

G.N.No.14/2000

**ENGAGEMENT TO MARRY**

NAME OF PARTIES : **Jese-Vasco Canon** of Meneng District and  
**Frizie Hartman** of Uaboe District.

DATE OF ENGAGEMENT : 2nd December, 1999.

**ALOYSIUS AMWANO**  
**MINISTER IN CHARGE**

NAME OF PARTIES : **Jeramon Agir** of Buada District and  
**Malka Grundler** of Boe District.

DATE OF ENGAGEMENT : 19th January, 2000

**NIMROD BOTELANGA**  
**MINISTER IN CHARGE**

---

G.N.NO.15/2000

**RE LAND DETERMINATION**

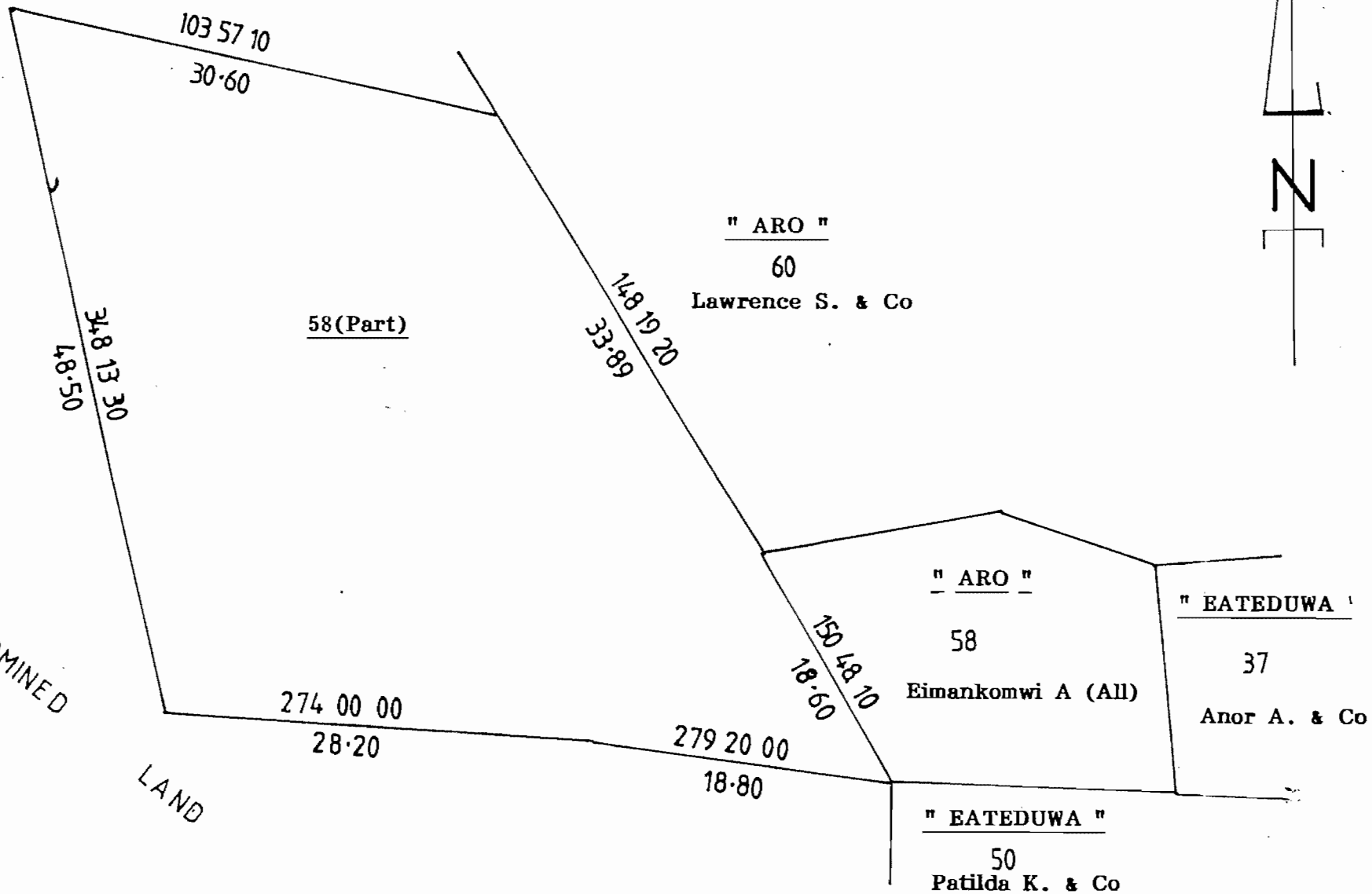
The Nauru Lands Committee hereby determines the ownership of certain land or shares in land as being that shown hereunder :-

<u>DISTRICT</u>	<u>PORT NO.</u>	<u>TYPE OF</u> <u>LAND</u>	<u>NAME OF</u> <u>LAND</u>	<u>REFERENCE</u>	<u>FORMER</u> <u>OWNER</u>	<u>SHARE</u>	<u>PRESENT OWNERS</u> <u>AND SHARES</u>
Ijuw	58 (Part)	c.l.	Aro	Gaz. 28/70	Dobouru (dec'd)	All	Eimankomwi Aliklik All

NOTE. The above re Determination was made to correct the boundaries of the block which was incorrect. Those who disagree with the above may appeal to the Supreme Court Registry within 21 days of the publication of this Government Gazette Notice.

LESLIE ADAM  
CHAIRMAN  
NAURU LANDS COMMITTEE

---



Determination of the Beneficiaries of the Estate of the late **Gaeow Appin** of Anabar District.

**ESTATE**

1. The Nauru Lands Committee has ascertained that the late **Gaeow Appin** had been determined by the decisions of the Nauru Lands Committee (or its predecessor the Lands Committee to be the owner of the following lands:-

<b><u>DISTRICT</u></b>	<b><u>PORTION NO.</u></b>	<b><u>TYPE OF LAND</u></b>	<b><u>NAME OF LAND</u></b>	<b><u>GAZETTE NOTICE OF OWNERSHIP</u></b>	<b><u>SHARE</u></b>
Anabar	18	p.l.	Atimetum	40/81	7/180
Anabar	46	p.l.	Eatiti	76/82	1/90
Anabar	105	c.l.	Domajenuwe	61/84	1/90
Anabar	63	p.l.	Atoedi	76/82	2/225
Anabar	77	c.l.	Anabar	40/81	2/45
Anibare	292	c.l.	Anibare	40/81	2/45
Anabar	78	c.l.	Domaiyenuwe	47/85	1/96
Anabar	99	c.l.	Eidoromen	47/85	1/96
Anabar	119	c.l.	Anuwo	40/81	7/90
Anabar	120	c.l.	Anuwo	40/81	7/90
Anabar	121	c.l.	Anuwo	40/81	7/90
Anabar	138	c.l.	Badanni	40/81	7/90
Anabar	139	c.l.	Badanni	40/81	7/90
Anetan	67	c.l.	Mititeru	40/81	7/90
Anabar	151	p.l.	Idomomodo	21/86	1/36
Anibare	220	p.l.	Tubwina	16/82	1/30
Boe	161	c.l.	Ibok	40/81	2/15
Buada	29	p.l.	Rubwinija	40/81	2/15
Ijuw	9	p.l.	Iwuteb	40/81	2/15
Menen	232	p.l.	Anoerara	40/81	2/15
Menen	275	p.l.	Atuwuro	40/81	2/15
Yaren	93	c.l.	Idagarawa	40/81	2/15
Yaren	137	c.l.	Ijongin	40/81	2/15
Yaren	138	c.l.	Amareobwiden	40/81	2/15
Yaren	209	c.l.	Kibaba	40/81	2/15
Yaren	275	p.l.	Amwareobwiden	40/81	2/15
Yaren	296	p.l.	Kibaba	40/81	2/15
Menen	341	p.l.	Ibea	61/84	19/288
Yaren	123	c.l.	Aningobwi	5/83	19/144
Yaren	248	p.l.	Anoeui	40/81	2/75
Yaren	343	p.l.	Anamaragi	40/81	2/75
Buada	394	p.l.	Animaer	30/93	1/16
Menen	429	p.l.	Eatetereni	87/97	1/8

**DETERMINATION OF BENEFICIARIES**

2. The Nauru Lands Committee has determined that the beneficiaries of the estate of the late Gaeow Appin are:- (a) in respect of the land shown in paragraph 1 above.

<b><u>DISTRICT</u></b>	<b><u>PORTION NO.</u></b>	<b><u>NAME OF LAND</u></b>	<b><u>BENEFICIARIES</u></b>	<b><u>SHARE</u></b>
Anabar	18	Atimetum	Lomax Apin Paner Apin Febriano Apin	7/900 7/900 7/900
		Nerina A. T/ee	(Edegeweia Emo Apin Nerina Apin (LTO))	7/900 7/900
Anabar	46	Eatiti	Lomax Apin Paner Apin Febriano Apin	1/450 1/450 1/450
		Nerina A. T/ee	(Edegeweia Emo Apin Nerina Apin (LTO))	1/450 1/450
Anabar	105	Domaijenuwe	As for Portion No.46 p.l. Anabar	
Anabar	63	Atoedi	Lomax Apin Paner Apin Febriano Apin	2/1125 2/1125 2/1125
		Nerina A. T/ee	(Edegeweia Emo Apin Nerina Apin (LTO))	2/1125 2/1125
Anabar	77	Anabar	Lomax Apin Paner Apin Febriano Apin	2/225 2/225 2/225
		Nerina A. T/ee	(Edegeweia Emo Apin Nerina Apin (LTO))	2/225 2/225
Anibare	292	Anibare	As for Portion No.77 c.l. Anabar	
Anabar	78	Domaiyenuwe	Lomax Apin Paner Apin Febriano Apin	1/480 1/480 1/480
		Nerina A. T/ee	(Edegeweia Emo Apin Nerina Apin (LTO))	1/480 1/480
Anabar	99	Eidoromen	As for Portion No.78 c.l. Anabar	
Anabar	119	Anuwo	Lomax Apin Paner Apin Febriano Apin	7/450 7/450 7/450
		Nerina A. T/ee	(Edegeweia Emo Apin Nerina Apin (LTO))	7/450 7/450
Anabar	120	Anuwo	As for Portion No.119 c.l. Anabar	
Anabar	121	Anuwo	-do-	
Anabar	138	Badanni	-do-	
Anabar	139	Badanni	-do-	
Anetan	67	Mititeru	-do-	
Anabar	151	Idomomodo	Lomax Apin Paner Apin Febriano Apin	1/180 1/180 1/180
		Nerina A. T/ee	(Edegeweia Emo Apin Nerina Apin (LTO))	1/180 1/180

G.N.No.17/2000 (cont'd)

Anibare	220	Tubwina	Lomax Apin	1/150
			Paner Apin	1/150
			Febriano Apin	1/150
		Nerina A. T/ee	(Edegewea Emo Apin	1/150
			Nerina Apin (LTO)	1/150
Boc	161	Ibok	Lomax Apin	2/75
			Paner Apin	2/75
			Febriano Apin	2/75
		Nerina A. T/ee	(Edegewea Emo Apin	2/75
			Nerina Apin (LTO)	2/75
Buada	29	Rubwinija	As for Portion No.161 c.l. Boc	
Ijuw	9	Iwuteb	-do-	
Menen	232	Anoerara	-do-	
Menen	275	Atuwuro	-do-	
Yaren	93	Idagarawa	-do-	
Yaren	137	Ijongin	-do-	
Yaren	138	Amareobwiden	-do-	
Yaren	209	Kibaba	-do-	
Yaren	275	Aniwareobwiden	-do-	
Yaren	296	Kibaba	-do-	
Menen	341	Ibea	Lomax Apin	19/1440
			Paner Apin	19/1440
			Febriano Apin	19/1440
		Nerina A. T/ee	(Edegewea Emo Apin	19/1440
			Nerina Apin (LTO)	19/1440
Yaren	123	Aningobwi	Lomax Apin	19/720
			Paner Apin	19/720
			Febriano Apin	19/720
		Nerina A. T/ee	(Edegewea Emo Apin	19/720
			Nerina Apin (LTO)	19/720
Yaren	248	Anocui	Lomax Apin	2/375
			Paner Apin	2/375
			Febriano Apin	2/375
		Nerina A. T/ee	(Edegewea Emo Apin	2/375
			Nerina Apin (LTO)	2/375
Yaren	343	Anamaragi	As for Portion No. 248 p.l. Yaren	
Buada	394	Animaer	Lomax Apin	1/80
			Paner Apin	1/80
			Febriano Apin	1/80
		Nerina A. T/ee	(Edegewea Emo Apin	1/80
			Nerina Apin (LTO)	1/80
Menen	429	Eatetereni	Lomax Apin	1/40
			Paner Apin	1/40
			Febriano Apin	1/40
		Nerina A. T/ee	(Edegewea Emo Apin	1/40
			Nerina Apin (LTO)	1/40

G.N.No.17/2000 (cont'd)

NOTE: Those who disagree with the distribution of this estate may appeal to the Supreme Court Registry within 21 days of the publication of this Government Gazette Notice.

LESLIE ADAM  
CHAIRMAN  
NAURU LANDS COMMITTEE

---



Determination of the Beneficiaries of the Estate of the late **Tautino Solomon** of Boe District.

**ESTATE**

1. The Nauru Lands Committee has ascertained that the late **Tautino Solomon** had been determined by the decisions of the Nauru Lands Committee (or its predecessor the Lands Committee to be the owner of the following lands:-

<b><u>DISTRICT</u></b>	<b><u>PORTION NO.</u></b>	<b><u>TYPE OF LAND</u></b>	<b><u>NAME OF LAND</u></b>	<b><u>GAZETTE NOTICE OF OWNERSHIP</u></b>	<b><u>SHARE</u></b>
Boe	54 c.l.		Gareow	41/99	1/240
Boe	150 c.l.		Atubwinumar	41/99	1/240
Buada	14 p.l.		Umwanawa	41/99	1/480
Yaren	339 p.l.		Umwanawa	41/99	1/480

**DETERMINATION OF BENEFICIARIES**

2. The Nauru Lands Committee has determined that the beneficiaries of the estate of the late **Tautino Solomon** are:- (a) in respect of the land shown in paragraph 1 above.

<b><u>DISTRICT</u></b>	<b><u>PORTION NO.</u></b>	<b><u>NAME OF LAND</u></b>	<b><u>BENEFICIARIES</u></b>	<b><u>SHARE</u></b>
Boe	54	Gareow	Enrico Solomon (LTO)	1/240
Boe	150	Atubwinumar	As for Portion No.54 c.l. Boe	
Buada	14	Umwanawa	Enrico Solomon (LTO)	1/480
Yaren	339	Umwanawa	As for Portion No.14 p.l. Buada	

**NOTE:** Those who disagree with the distribution of this estate may appeal to the Supreme Court Registry within 21 days of the publication of this Government Gazette Notice.

LESLIE ADAM  
CHAIRMAN  
**NAURU LANDS COMMITTEE**